



WAIHI COLLEGE

NEWSLETTER

ISSUE 21 | 2024

RA WHAKANGAHAU

This year we changed up how we celebrated Matariki and are hosting a Ra Whakangahau Concert next month.

All local kura and ECE's are invited to perform, and the community is invited to watch as always. But this year, instead of having it in the evening and finishing late - we are having a 'rolling' day time concert.

The concert will still take place in the Waihi College Hall and the date is set down for 6th September. More details to come so watch this space.

PINK RIBBON HIGH TEA—26th August

Waihi College and the incredible culinary team led by our fabulous Ms Fitz are hosting a Pink Ribbon High Tea! This event will be held on Monday 26th August at 1.30pm in the College Hall. Tickets are only \$30 and to get yours, please email Siobhan on siobhanF@waihicol.school.nz.

If you aren't able to eat in, we can also do take home boxes which you can collect from us!

All profits will go to the Pink Ribbon Foundation



**PINK RIBBON
HIGH TEA**

WAIHI COLLEGE HALL
MONDAY 26TH AUGUST @ 1.30PM

TICKETS ONLY \$30
ORDER NOW VIA EMAIL @
[SIOBHANF@WAIHICOL.SCHOOL.NZ](mailto:siobhanf@waihicol.school.nz)

All profits will go to the
Breast Cancer Foundation



36 Seddon Street
Waihi
3610

www.paperplus.co.nz

waihi@paperplus.co.nz

**THANKS TO OUR FABULOUS
SPONSORS—SUCH AS WAIHI PAPER
PLUS!**

PRINCIPAL'S COMMENT

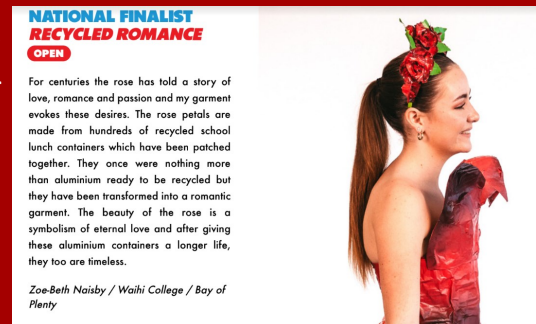
Kia ora Whanau,

What a brilliant week it has been! Huge congratulations to Zoe-Beth who has been awarded as a National Finalist AND Best interpretation of the OPEN category. We are blown away by your amazing achievement, and can't wait to see what you create next!



Congratulations to all our students who participated in the math competition last week - we had some fierce competitors and some math wizards joined together in teams, to blow us all away with their quick minds and ability! My thanks to Mrs Cook and Mr Hallam for organizing such a great event.

Another big congratulation to our youngest musicians - who competed this weekend at Band Quest - we were fortunate enough to have them perform for us last week at assembly, and they certainly blew us away with their talent and performance! Thanks Mr Randell, for making this happen for our students!



We were thrilled this week - to open our new building (still to be named), with a blessing. Many have dreamed this into being. The library will be upstairs, and has been given the name Te Pataka Pukapuka, this space will be an absolute haven for our students, to sit and breath, research and reflect. The bottom story is dedicated to our Senior Hub, and a place for learning for all senior students. What I love about this space is that it is designed to have various groups or individuals in it, studying various things all at the same time - many of our students who are working towards transitioning from school life to the workforce or tertiary, will use this space. Big thanks to those who have made it happen!



Lastly, in other news, we start the very beginning of our playground this week. As you will remember, we were blessed with a grant from One Foundation, and this enables us to start the swing aspect of our playground - woohoo!! Now to find further grants to make more of it happen!



Have a fabulous week - I am always keen to connect, so feel free to drop me a line, and make a time!

Nga manaakitanga, Briar

YEAR 13 OUTDOOR EDUCATION



Congratulations on a hugely successful tramp into the Kaimais by our Year 13 Outdoor Education class. After a few setbacks with dates last term it was nice to get our final tramp under the belt. It was great to see how well prepared everyone was although I'm sure some may be taking a break from two minute noodles for a

month or two! The tramp along the Historic Leyland O'brien Tramway up to Te Whare Oki Oki provided a great challenge which included river crossings and some unexpectedly deep mud. The Place Responsive standard encourages students to think and learn beyond the experience itself, but to understand cultural, historical, social and environmental considerations and thus providing an enriched and connected outdoor experience. It was a pleasure to spend two days away with this team.

David Tait



COMING UP

Daffodil Day - 23rd August. Full school mufti and bake sale and fry bread stall on the quad at first break.

Pink Ribbon High Tea - 26th August. High Tea in the Hall at 1.30 - get your tickets now via email to siobhanf@waihicol.school.nz

Ra Whakangahau Concert - 6th September. This will be in the College Hall. Rolling, all day event!

AIMS Games - 7th 13th September

Talent Quest - 25th September at first break

Spring Concert - 25th September in the College Hall at 6.30pm

Spirit Days - 26th & 27th September

CHROME COLLECTIVE CHARITABLE TRUST

The Chrome Collective exists to immerse those with disabilities into the wider community. We help those with disabilities create meaningful micro-businesses and offer training and employment opportunities, as well as advocacy services. The main goal for our organisation is proper community integration. We do this by welcoming people with disabilities into the larger community, to fully participate in life at the same level as non-disabled individuals with benefits to all.

Please take a look at our website to find out more about us and how we can support you with transi-

tioning out into the community as school life comes to an end.

www.chromecollective.co.nz



NURSES CORNER

**WAIHI COLLEGE HAS A SCHOOL NURSE
AVAILABLE MONDAY-THURSDAY ALL DAY**

POP IN TO THE BUILDING NEXT TO THE TREE OF
LIFE
WALK IN APPOINTMENT, OR TEXT/PHONE TO
0272983787

LOOK FORWARD TO SEEING YOU IF YOU HAVE
ANY HEALTH NEEDS OR QUESTIONS
MARGIE GOLDSWORTHY / SCHOOL NURSE FOR
WAIHI COLLEGE



Ngā mihi, with kind regards
Margie (She/Her)

[Margie Goldsworthy](#) | SCHOOL NURSE

M: 0272983787

E: margie.goldsworthy@pinnacle.health.nz

THIS NEWSLETTER IS SENT TO YOU VIA EMAIL AND CAN ALSO BE FOUND ON OUR WEBSITE

What is Maths Mind?

Maths Mind is an annual junior mathematical competition. Each team has 20 problems to solve in the allocated 45 minutes with a maximum of 5 attempts at each question with 5 points being awarded for each correct answer on the first attempt, 4 points for the second attempt and so on. The winners are the teams with the highest number of points. Each team has four members. One is appointed the 'runner' and has the task of taking written answers to the nearest judge. The judge will either record a correct answer, else hand the question back and request the team has another attempt to obtain the correct answer.

On Monday it was the year 7 and 8 school final. Students had been practising for the previous few weeks in their respective Wakas and class finals were held during week 3. There was a maximum of 2 teams per class or 8 per Waka qualifying through to the school final. It was left at the discretion of the home room teachers to decide how they would run their class competitions. Tanui decided to mix up their classes and entered their best 5 teams into the school final whilst Te Arawa's teams all came from individual classes. The atmosphere in the hall was a really positive one with some great teamwork on display. The live leaderboard and countdown timer added some extra suspense and for a long while it was a very closely fought contest. Towards the latter stages a clear two horse race began to unfold for the win between the teams of Wheke 1 and Tainui 2. Ultimately it was Tainui 2 that took the win by an extremely small margin of 4 points with a total of 44 meaning one more correct first attempt answer could have snatched it for Wheke 2. Interestingly Tainui only attempted 11 questions but their meticulousness paid off by answering 8 of those questions correctly on their first attempt. In a contrasting style Wheke 2 actually attempted more questions than any other team reaching question 16 by the end of the competition but fewer of their correct answers came on the first attempt. It was also a close battle for the final place on the podium with Patiki 1 just doing enough to take it with 30 points.

1st place: Tainui 2 - Owen Laing, Beau Wilson, John Graham

2nd place: Wheke 1 - Ryan Fletcher, Connor Hallett, Brooklyn Archer, Aubree Leslie

3rd place: Patiki 1 - Scarlett Holtz-Taylor, Poppy Bolderston, Emma Clark, Reuben Carey

| Team Name | TOTAL | QU1 | QU2 | QU3 | QU4 | QU5 | QU6 | QU7 | QU8 | QU9 | QU10 | QU11 | QU12 | QU13 | QU14 | QU15 | QU16 |
|-----------|-------|-----|-----|-----|-----|-----|-----|-----|-----|-----|------|------|------|------|------|------|------|
| Whai 1 | 26 | 5 | 4 | 5 | 4 | 0 | 0 | 3 | 5 | 0 | 0 | 0 | 0 | | | | |
| Whai 2 | 26 | 5 | 1 | 4 | 4 | 4 | 0 | 0 | 3 | 5 | | | | | | | |
| Wheke 1 | 40 | 3 | 0 | 5 | 5 | 5 | 0 | 0 | 5 | 4 | 0 | 0 | 5 | 5 | 3 | 0 | 0 |
| Wheke 2 | 22 | 4 | 0 | 0 | 5 | 3 | 0 | 0 | 5 | 5 | | | | | | | |
| Tohora 1 | 14 | 4 | 3 | 0 | 5 | 2 | 0 | | | | | | | | | | |
| Tohora 2 | 6 | 3 | 0 | 0 | 0 | 3 | | | | | | | | | | | |
| Tohora 3 | 11 | 5 | 1 | 0 | 0 | 5 | 0 | 0 | 0 | | | | | | | | |
| Patiki 1 | 30 | 5 | 4 | 5 | 5 | 5 | 0 | 0 | 4 | 2 | 0 | | | | | | |
| Tainui 1 | 24 | 5 | 0 | 5 | 5 | 4 | 0 | 0 | 0 | 5 | 0 | | | | | | |
| Tainui 2 | 44 | 5 | 5 | 5 | 5 | 4 | 0 | 5 | 5 | 5 | 5 | 0 | | | | | |
| Tainui 3 | 17 | 2 | 0 | 2 | 4 | 2 | 0 | 0 | 5 | 2 | | | | | | | |
| Tainui 4 | 18 | 0 | 2 | 5 | 5 | 5 | 1 | | | | | | | | | | |
| Tainui 5 | 22 | 2 | 4 | 5 | 3 | 3 | 0 | 0 | 0 | 5 | 0 | | | | | | |

MATHSMIND continued

On Tuesday it was the turn of the year 9 and 10s. This consisted of two separate competitions that were running simultaneously and there was a maximum of two teams per year 9 and 10 class based on performances in class competitions that took place the previous week.

In the year 9 competition early on it was a really close contest with only a few points separating the top 4 teams for quite some time. However later into the competition it appeared to be that the questions were becoming more difficult with slower scoring meaning that every correct answer could prove to be crucial. Just like the year 7 and 8 competition, by the end there were only 4 points between the first and second place with Kereru taking the win on 30 points followed by Kahu on 26 points. Third spot went to Whio 1. What was even more impressive with these top two teams was that both were under the full quota of 4 team members due to fellow team members that were ill on the day.



1st: Kereru - Patrick Pedersen-Semmens, Tahlia Mudford, Flynn Adlington

2nd: Kahu - Eli Townsend, Truman Alexander

3rd: Whio 1 - Tanekaha Nepia, Anakah Lewis, Zariah Brewerton, Daria Galey



In the year 10 competition from quite an early stage there appeared to be 2 teams that were pulling away from the rest, Manuka and Nikau 2. Behind this all teams were pretty closely matched. Ultimately the consistency of Nikau 2 paid off and they took the win on 40 points with Manuka 9 points behind on 31. Totara 1 prevailed in the battle for third place with a total of 24 points.

1st: Nikau 2 - Jessica Yeh, Charisse Mercader, Clarisse Mercader

2nd: Manuka - Nikora MacCalman, Logan Prouting, Saffire Walters, Sami Hug

3rd: Totara 1 - Ben Paulsen, Makai Ng Wun, Ashtyn Jacob, Elaij Stockman

A big well done to all students involved! Also a big thanks to the year 12 and 13 students who were our judges for the competition and to their teachers for allowing them to be out of class. The competitions wouldn't have been possible without them and they acted as great role models for our younger students. Finally a big thanks to all other staff involved with any organisation and support, I'm sure the students involved appreciated it immensely!

STUDENT REP NOMINATIONS

Student Rep Nominations open on 22nd August and close at 12 on 28th August. Nomination forms are in Debbie's office (right next to Whaea Briar)

WRITING COMPETITION

For the first time, our writing competition is open to every student in the school. There are cash prizes for all five sections and you can submit whatever you like, including poems and song lyrics. Get your entry ready by the end of week nine and hand it to your English teacher. If you don't have an English class, it goes to Mrs Barrow.

EDVENTURE—ADVANCED OUTDOORS CAMP

Edventure Advanced Outdoors Camp (8-13yr olds) based at Ngamuwahine Lodge, Tauranga, Monday 7th Oct - Fri 11th Oct. \$675 (full week)

50 Spaces available on the bus.

The second week of the school holidays brings you a NEW Venue and another set of amazing Edventure experiences. This week-long camp is for children of all ages looking for a mix of our usual fun outdoors activities with the option of some 'challenge by choice' activities on Ngamuwahine Lodge's (owned by Tauranga Intermediate) high ropes and rock climbing wall. You will have the option of sleeping in bivouacs, tents or cabins (or mix it up!). We have access to: bush walks, swimming holes, mountain bikes, kayaks, paintball, laser tag, as well as archery, air-rifle, outdoor cooking and much more!

Check out the NEW: [Edventure Tauranga Facebook Page](#); or e-mail: todd@edventure.co.nz for more information.



Advanced Outdoors Camp
Week 2 (7th-11th October):
@ Ngamuwahine Lodge (NEW VENUE!!)
\$675

We have an amazing week lined up with bush walks, archery, air rifle, fire building and cooking, hut building, orienteering, kayaking, high ropes, rock-climbing, paintball & laser tag.

BOOK HERE

Hamilton & Tauranga Pick-up/Drop off options available

For more information:
Todd Burton
todd@edventure.co.nz
0275349949



Click: [Edventure Tauranga Facebook Page](#)

WAIHI COLLEGE SPORTS WALL OF FAME

Waihi College is in the process of updating the Sports Wall of Fame.

If you or anyone you know represented New Zealand (in sport), please email us on wendys@waihicol.school.nz or bandwilloughby@gmail.com. Examples could be: you are a National Champ or have represented NZ in a national team. Please provide us details of the sport, the achievement made and the date it happened.



AHUREA TAIWANESE STUDENTS

Year 9 & 10 languages interacting with Ahurea Taiwanese students last week.



JUNIOR ROCK BAND—DON'T FRET (written by Hamish McKinnon)

'Don't Fret' was formed at the beginning of this term consisting of juniors keen to get involved in music performance and being a part of a group. After a few weeks of preparation, working on two songs: 'Summer of 69' by Brian Adams, and 'One Day' by Matisyahu for the aim of competing at Bandquest.

Bandquest is an annual, nationwide rock competition in which primary school and intermediate students have 6 minutes to put on a music performance. All participants must be unsigned, so bandquest is a great opportunity to see and participate against bands of similar and different levels, and is a great opportunity to get the band's name out there. During the band's time on stage they can play as many or as little songs as they would like.

Mr Randell is the band manager and some-

what dad. I am kind of their motivator and group friend.

The band is made up of Reuben Carey, Thierry Smith, Beau Wilson, Jimi Randell, Sam Davison and Noah McNeil

UPDATE: [#Bandquest](#) was a huge success!!! We're so proud of our boys - they did so well and stood their ground. Sam got the special instrument award for his cool tambourine playing! Well done boys!



SCHOOL LUNCHES—COMING UP

Please note meals and/or ingredients are subject to change without notice

Week 5

Beef Curry

Ham and Cheese Sandwich

BBQ Chicken Pizza

Chicken Loaded wedges

Cheese Burger Wrap

Week 7

Mac Cheese

Ham and Cheese Sandwich

Ham Pizza

Beef and Veggie Rissoles

Mex Mince

Week 6

Meatball Pasta

Ham and Cheese Sandwich

BBQ Chicken Pizza

Cottage Pie

Butter Chicken

