

NCEA COURSE BOOKLET 2025



WAIHI
COLLEGE

LEVEL ONE

NCEA stands for the National Certificate of Educational Achievement. It's the main qualification for senior secondary school students, and it's available at Levels 1, 2 and 3. NCEA is internationally recognised.

The purpose of this booklet is to inform students, parents and whānau about the courses (subjects) available to students in 2025. It is important that you make good informed choices that relate to your future career and interests. You need to ensure that you make the choices for your interests and skill development rather than pick according to your friendship group.

While we cannot guarantee that you will be able to select subjects in all the areas that you like, we hope you can access classes that meet most of your needs and interests.

NZQA have produced an excellent brochure explaining how NCEA works at NCEA Level 1, 2 and 3 and the pathways through to tertiary education. Please scan this QR code to download the brochure.



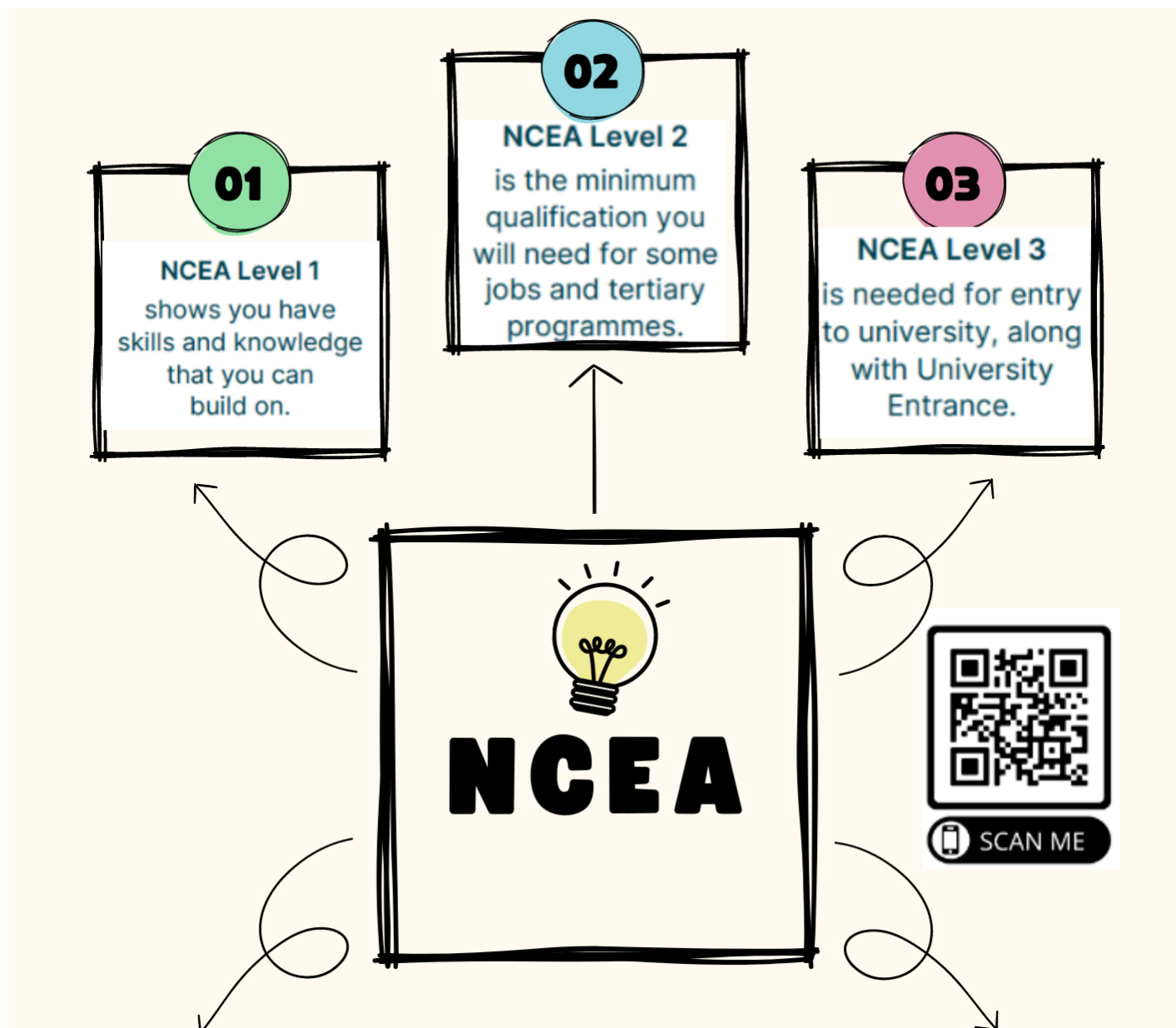
LEVEL ONE

- Students in Year 11 will choose SIX Subjects and TWO Super Tuesday Courses
- Students can choose subjects from any learning area
- Students need to be aware of their Literacy and Numeracy results from the 2024 CAA assessments. If students have not yet achieved Literacy and/or Numeracy, they **MUST** select the Literacy and/or Numeracy courses in 2025
- Super Tuesday is a full day course that is experience based learning where students take on a new skill or interest. These courses can be school based, Trades Academies, Outside Providers or Community based Gateway (Work Experience)

BYOD AT WAIHI COLLEGE

- Next Year, 2025, Waihi College will be moving to a fully BYOD model. Students and teachers are working more and more with digital platforms for the distribution and completion of work in the classroom. By students having their own device, there is a seamless link between home and in school learning and the student can personalise their device to suit their own needs.
- We strongly recommend that students/whanau purchase their own device, particularly at NCEA level. Waihi College will have devices available on lease for students to lease should students/whanau be unable to purchase one themselves.

HOW NCEA WORKS



How to achieve each level of NCEA in 2024

NCEA Level 1 (Yr 11)	NCEA Level 2 (Yr 12)	NCEA Level 3 (Yr 13)	University Entrance (UE)
60 credits at Level 1	60 credits at Level 2	60 credits at Level 3	14 credits in each of 3 approved subjects
Literacy Co-Requisite			NCEA Level 3
Numeracy Co-Requisite			10 Level 2 Literacy credits - 5 reading - 5 writing
<i>Or 10 Literacy and 10 Numeracy credits from specific L1 standards.</i>			10 Level 1 Numeracy credits

NCEA SUBJECTS - YOU WILL CHOOSE SIX SUBJECTS AND TWO SUPER TUESDAY COURSES

English	The Arts	Technology	Science	Health & PE	Te Ao Māori	Mathematics	Social Studies	Pathways & Transitions	Super Tuesday	Additional Courses
-------------------------	--------------------------	----------------------------	-------------------------	---------------------------------	-----------------------------	-----------------------------	--------------------------------	--	-------------------------------	------------------------------------

[Click here to see the Level 1 Subject Lines](#)

LEARNING AREA: ENGLISH

Level 1 ENGLISH (JBA/PBU)								
Course Outline: This course offers the full range of assessment standards. 919124 and 5 are internally assessed from work produced in the classroom.								
Proposed NCEA Standards for 2025 (these will be adjusted based on student interest and class makeup):								
Standard # and Version	Standard Title	Internal or External (I/E)	NCEA Level (1/2/3)	Number of Credits	*FAO? (Y/N)	+Literacy (L1/R/W/B)	Numeracy (L1)	Completed in T1, T2, T3 or T4
AS91924	Demonstrate understanding of how context shapes verbal language use	I	1	5	y			T1
AS91925	Demonstrate understanding of specific aspects of studied text	I	1	5	Y			T2
AS919126	Develop ideas in writing using stylistic and written conventions	E	1	5	N			T4
AS91927	Demonstrate understanding of significant aspects of unfamiliar texts (optional)	E	1	5	N			T4
Is an electronic device necessary for this for this course?							YES	NO

*Further Assessment Opportunity Available

[Return to Course Index](#)

***L1** –Level 1 Literacy, **R** – University Entrance Literacy Reading, **W** - University Entrance Literacy Writing, **B** - University Entrance Literacy Both Reading & Writing

Level 1 LITERACY (MWL/JBA)

Course Outline: It will improve students' capabilities in reading and writing to enable them to access further learning, develop important life skills, and engage in employment and in their communities.

Students will improve their ability to read and write texts such as: information reports, magazine articles, editorials, letters and social media posts.

Proposed NCEA Standards for 2025 (these will be adjusted based on student interest and class makeup):

Standard # and Version	Standard Title	Internal or External (I/E)	NCEA Level (1/2/3)	Number of Credits	*FAO? (Y/N)	+Literacy (L1/R/W/B)	Numeracy (L1)	Completed in T1, T2, T3 or T4
US32403	Read written texts to understand ideas and information (Literacy Reading)	E	1	5	Y	L1		National test dates apply
US32405:	Write texts to communicate ideas and information (Literacy Writing)	E	1	5	Y	L1		National test dates apply
AS91925	Demonstrate understanding of specific aspects of studied text	I	1	5	Y	L1		2
AS91924	Demonstrate understanding of how context shapes verbal language use	I	1	5	Y	L1		3
Is an electronic device necessary for this for this course?							YES	NO

*Further Assessment Opportunity Available

[Return to Course Index](#)

***L1** –Level 1 Literacy, **R** – University Entrance Literacy Reading, **W** - University Entrance Literacy Writing, **B** - University Entrance Literacy Both Reading & Writing

LEARNING AREA: THE ARTS

Level 1 DRAMA (IBE)

Course Outline: We will explore and present scenes from New Zealand plays, participate in devised drama, and practise a theatre form, such as Commedia del' Arte. The course may include a trip to a live performance, a school's tour company, or a recorded resource provided by a theatre company.

Proposed NCEA Standards for 2024 (these will be adjusted based on student interest and class makeup):

Standard # and Version	Standard Title	Internal or External (I/E)	NCEA Level (1/2/3)	Number of Credits	*FAO? (Y/N)	+Literacy (L1/R/W/B)	Numeracy (L1)	Completed in T1, T2, T3 or T4
91940 v3	Explore the function of Theatre Aotearoa	I	1	5				T1
91941 v3	Participate in creative strategies to create a drama	I	1	5				T2
91942 v3	Perform a scripted role for an audience using drama techniques	E	1	5				T3
Is an electronic device necessary for this for this course?							YES	NO

*Further Assessment Opportunity Available

[Return to Course Index](#)

***L1** –Level 1 Literacy, **R** – University Entrance Literacy Reading, **W** - University Entrance Literacy Writing, **B** - University Entrance Literacy Both Reading & Writing

Level 1 MUSIC (ERA)

Course Outline: Level 1 music is an easy introduction to higher level music achievement. Students taking this course should have a love for performing music either on an instrument or enjoy singing to a reasonable standard. There is also an opportunity for students to do a context study on two pieces of music, one being a Maori song. Then, for creative students, there is a composition task where students can write their own song or instrumental piece. They will learn what it takes to prepare for a concert and what it takes to write a piece of music.

Proposed NCEA Standards for 2024 (these will be adjusted based on student interest and class makeup):

Standard # and Version	Standard Title	Internal or External (I/E)	NCEA Level (1/2/3)	Number of Credits	*FAO? (Y/N)	+Literacy (L1/R/W/B)	Numeracy (L1)	Completed in T1, T2, T3 or T4
AS91948	Use music skills in a music style	I	1	5				T2
AS91949	Demonstrate music performance skills	I	1	5				T3
AS91950	Demonstrate understanding of music in relation to context	E	1	5				T4

AS91951	Shape music ideas to create an original composition	E	1	5				T4
Is an electronic device necessary for this for this course?							YES	NO

Level 1 VISUAL ART (PKI)

Course Outline: This course mixes both digital and practical art processes, designed to develop student's skill set and give a taste of what to expect in each of the senior visual art fields of Photography, Design and Painting. Students will learn how to generate, develop, refine and modify their own ideas around their chosen theme. Artist models will be researched to understand processes and procedures to assist students in expanding ideas using a range of mixed media. Students will be able to explore a variety of cultural contexts and produce a portfolio of finished paintings and drawings.

Computers/devices with specialised digital software will be provided for this course

Proposed NCEA Standards for 2024 (these will be adjusted based on student interest and class makeup):

Standard # and Version	Standard Title	Internal or External (I/E)	NCEA Level (1/2/3)	Number of Credits	*FAO? (Y/N)	+Literacy (L1/R/W/B)	Numeracy (L1)	Completed in T1, T2, T3 or T4
91913 V3	Produced a resolved artwork appropriate to established art making conventions	I	1	5	Y			T1
91914 V4	Explore Visual Arts processes and conventions to inform own artmaking	E	1	5	N			T3
91915 V3	Create a sustained body of artworks in response to an art making proposition	E	1	5	N			T4
Is an electronic device necessary for this for this course?							YES	NO

*Further Assessment Opportunity Available

[Return to Course Index](#)

***L1** –Level 1 Literacy, **R** – University Entrance Literacy Reading, **W** - University Entrance Literacy Writing, **B** - University Entrance Literacy Both Reading & Writing

LEARNING AREA: TECHNOLOGY

Level 1 FOOD TECHNOLOGY (SFI)

Course Outline: This course is designed for those with an interest in food and a love of design. To start the year you will work with a team to plan and create a celebratory event. For term 3 and 4 you will explore the values of Manaakitanga and Kaitiakitanga as you design products suitable for a stakeholder.

Proposed NCEA Standards for 2024 (these will be adjusted based on student interest and class makeup):

Standard # and Version	Standard Title	Internal or External (I/E)	NCEA Level (1/2/3)	Number of Credits	*FAO? (Y/N)	+Literacy (L1/R/W/B)	Numeracy (L1)	Completed in T1, T2, T3 or T4
AS 92012 v3	Develop a Materials and Processing Technology outcome for an authentic context	I	1	6	N			T1
AS 92013 v 3	Experiment with materials to develop a Materials and Processing Technology outcome	I	1	6	N			T2/3
AS 92014 v3	Sustainable design practices	E	1	4	N			T3/4
AS 92015 v 3	Demonstrate understanding of techniques selected for a feasible Materials and Processing Technology outcome	E	1	4	N			T3/4
Is an electronic device necessary for this for this course?							YES	NO

Level 1 HOSPITALITY (TBC)

Course Outline: This course is designed to build the foundational skills of basic cookery. Students will work through a range of cookery techniques needed to build meal ideas and menu items. In the second half of the year we offer a barista basics course to help those interested in part time cafe work.

Proposed NCEA Standards for 2024 (these will be adjusted based on student interest and class makeup):

Standard # and Version	Standard Title	Internal or External (I/E)	NCEA Level (1/2/3)	Number of Credits	*FAO? (Y/N)	+Literacy (L1/R/W/B)	Numeracy (L1)	Completed in T1, T2, T3 or T4
US15900 v 6	Meat dishes	I	1	4		N	N	T2
US 15901 v6	Fruit and vegetable dishes	I	1	3		N	N	T1
US 15921 v6	Baking	I	1	3				T3
US 17285 v10	Espresso beverages	I	2	4		N	N	T3/T4
Is an electronic device necessary for this for this course?							YES	NO

*Further Assessment Opportunity Available

[Return to Course Index](#)

***L1** –Level 1 Literacy, **R** – University Entrance Literacy Reading, **W** - University Entrance Literacy Writing, **B** - University Entrance Literacy Both Reading & Writing

Level 1 ENGINEERING (GWY)

Course Outline: This is for those with an eye for design and a need for speed ! You will start the year learning some basic skills in the workshop working with resistant materials and make yourself somewhere to keep your tools. For the remaining time you will be unleashing your creativity to design and make a vehicle to race in our special Waihi College Grand Prix.

A take home cost will be incorporated into this course and will be discussed with students as each project is started.

Proposed NCEA Standards for 2024 (these will be adjusted based on student interest and class makeup):

Standard # and Version	Standard Title	Internal or External (I/E)	NCEA Level (1/2/3)	Number of Credits	*FAO? (Y/N)	+Literacy (L1/R/W/B)	Numeracy (L1)	Completed in T1, T2, T3 or T4
AS 92012 v3	Develop materials and processing outcome in an authentic context	I	1	6	Y	N	N	3
AS 92015 v3	Demonstrate understand of techniques selected for a feasible Materials and Processing Technology outcome	E	1	4	N	N	N	3-4
US 22924	Develop a simple product using engineering materials	I	1	10	Y	N	N	1
Is an electronic device necessary for this for this course?							YES	NO

*Further Assessment Opportunity Available

[Return to Course Index](#)

***L1** –Level 1 Literacy, **R** – University Entrance Literacy Reading, **W** - University Entrance Literacy Writing, **B** - University Entrance Literacy Both Reading & Writing

Level 1 HARD MATERIALS (PRY)

Course Outline: This course is designed to develop a range of skills suitable to be used in the building industry. Students will work through BCATS standards to create a toolbox and a storage chest. Towards the latter part of the year students will use their new knowledge and skill set to design and create their own indoor table. Portfolios of evidence will be developed throughout the year to prepare students for the evidence requirements of apprenticeships.

A take home cost will be incorporated into this course and will be discussed with students as each project is started.

Proposed NCEA Standards for 2024 (these will be adjusted based on student interest and class makeup):

Standard # and Version	Standard Title	Internal or External (I/E)	NCEA Level (1/2/3)	Number of Credits	*FAO? (Y/N)	+Literacy (L1/R/W/B)	Numeracy (L1)	Completed in T1, T2, T3 or T4
US 24352	Safety in the workshop	I	1	2	Y	N	N	T1
US 24355	Manufacturing materials	I	1	4	Y	N	N	T2
US 25919	Hardware and Fastening	I	1	2	Y	N	N	T3
US 24356	Procedures and Processes	I	1	8	Y	N	N	T3/4
Is an electronic device necessary for this for this course?							YES	NO

Level 1 DIGITAL TECHNOLOGY (JST)

Course Outline: Discover the world of Digital Technology through Computer Programming and Designing for Digital Outcomes. Learn to create interactive digital solutions, be challenged to design impressive digital projects and tackle real-world issues. With engaging projects and personalised support, you'll master the art of developing your own tech creations.

It is strongly advised that students have at least a 16GB flash drive or portable hard drive to store and backup their work.

Proposed NCEA Standards for 2024 (these will be adjusted based on student interest and class makeup):

Standard # and Version	Standard Title	Internal or External (I/E)	NCEA Level (1/2/3)	Number of Credits	*FAO? (Y/N)	+Literacy (L1/R/W/B)	Numeracy (L1)	Completed in T1, T2, T3 or T4
AS92004 v 2	Create a computer program	I	1	5	Y	N	N	T1
AS92005 v2	Create a digital technologies outcome	I	1	5	Y	N	N	T3
AS 92007 v3	Create a digital technologies outcome	E	1	5	Y	N	N	T4
Is an electronic device necessary for this for this course?							YES	NO

*Further Assessment Opportunity Available

[Return to Course Index](#)

***L1** –Level 1 Literacy, **R** – University Entrance Literacy Reading, **W** - University Entrance Literacy Writing, **B** - University Entrance Literacy Both Reading & Writing

LEARNING AREA: SCIENCE

Level 1 SCIENCE - Humans and Our World (NCL)

Course Outline: The strength of humans is our ability to work together to change our surroundings, however since the industrial revolution we have started to affect our environment on a global scale. In this subject ākonga will focus on some human driven chemical reactions and the changes these reactions have on the environment. This subject is ideal for those students looking to use science knowledge for the betterment of our shared future. This course also includes an introduction to genetics. It will cover the basic principles of gene expression and inheritance so that we can better guide human intervention in medical diagnosis, forensic investigation, and conservation. Pathways from this course include Level 2 Chemistry, Biology, and Applied Science.

Proposed NCEA Standards for 2025 (these will be adjusted based on student interest and class makeup):

Standard # and Version	Standard Title	Internal or External (I/E)	NCEA Level (1/2/3)	Number of Credits	*FAO? (Y/N)	+Literacy (L1/R/W/B)	Numeracy (L1)	Completed in T1, T2, T3 or T4
92021	Demonstrate understanding of chemical reactions in context	I	1	6				T1
92044	Demonstrate understanding of human-induced change within the Earth system	I	1	5				T2
92022	Demonstrate understanding of genetic variation in relation to an identified characteristic	E	1	5				T3
Is an electronic device necessary for this for this course?							YES	NO

*Further Assessment Opportunity Available

[Return to Course Index](#)

Level 1 SCIENCE - Investigating in Physics (JMK)

Course Outline: The purpose of this course is to gain a deeper understanding of the rules of our universe, through a combination of hands-on experiments, modelling, and a study of the flow of energy. This subject is ideal for those curious ākonga who want to prod the world to see what happens. Those ākonga wishing to extend themselves can also opt into testing their knowledge of the way energy moves through our world with an examination. Pathways from this course include Level 2 Physics.

Proposed NCEA Standards for 2025 (these will be adjusted based on student interest and class makeup):

Standard # and Version	Standard Title	Internal or External (I/E)	NCEA Level (1/2/3)	Number of Credits	*FAO? (Y/N)	+Literacy (L1/R/W/B)	Numeracy (L1)	Completed in T1, T2, T3 or T4
91921	Demonstrate understanding of the use of a range of scientific investigative approaches in a context	I	1	5				T1/2
92045	Demonstrate understanding of a physical phenomenon through investigation	I	1	5				T2/T3
92047	Demonstrate understanding of a physical system using energy concepts	E	1	5				T2/T3
Is an electronic device necessary for this for this course?							YES	

*Further Assessment Opportunity Available

[Return to Course Index](#)

***L1** –Level 1 Literacy, **R** – University Entrance Literacy Reading, **W** - University Entrance Literacy Writing, **B** - University Entrance Literacy Both Reading & Writing

Level 1 HORTICULTURE (BWE)

Course Outline: This course involves learning about growing plants.

Students will create vegetable gardens, which they will look after. They need to be prepared to remove weeds and dig up gardens.

They will also grow plants in containers in the greenhouse.

Students need to keep a record of what they do each day in a log book.

Later in the year, the students will be using some of their understanding of plants, as well as extra learning in the classroom, to complete an Achievement Standard linking plant processes with management practices in the production of kiwifruit. This will also include learning about Maori values.

Proposed NCEA Standards for 2025 (these will be adjusted based on student interest and class makeup):

Standard # and Version	Standard Title	Internal or External (I/E)	NCEA Level (1/2/3)	Number of Credits	*FAO? (Y/N)	+Literacy (L1/R/W/B)	Numeracy (L1)	Completed in T1, T2, T3 or T4
US1	Prepare and sow outdoor seedbeds manually	I	1	5	N	N	N	T2
US29508	Monitor germination and Emergence	I	2	5	Y	N	N	T2
US23783	Grow and maintain plants in containers from seed.	I	1	5	N	N	N	T3
AS 91928	Life processes and how they are managed in a primary production system	I	1	6	N		N	T4
Is an electronic device necessary for this for this course?							YES	NO

*Further Assessment Opportunity Available

[Return to Course Index](#)

***L1** –Level 1 Literacy, **R** – University Entrance Literacy Reading, **W** - University Entrance Literacy Writing, **B** - University Entrance Literacy Both Reading & Writing

LEARNING AREA: HEALTH AND PHYSICAL EDUCATION

Level 1 HEALTH STUDIES (SKE)

Course Outline: During Health Studies you will work independently, in small groups and as a class to complete assessments based around topics which are current, and relevant to your lives ensuring you have a clear understanding of well-being, as well as learning how to make decisions in a health related situation. You will also be looking at understanding and developing strategies to help enhance your own well-being.

Proposed NCEA Standards for 2025 (these will be adjusted based on student interest and class makeup):

Standard # and Version	Standard Title	Internal or External (I/E)	NCEA Level (1/2/3)	Number of Credits	*FAO? (Y/N)	+Literacy (L1/R/W/B)	Numeracy (L1)	Completed in T1, T2, T3 or T4
92008	Demonstrate understanding of hauora in a health-related context through the application of a model of health	I	1	5	N	N	N	1
92009	Demonstrate understanding of decision making in a health related situation	I	1	5	N	N	N	2
92011	Demonstrate understanding of strategies that enhance hauora	E	1	5	N	N	N	3
Is an electronic device necessary for this for this course?							YES	NO

*Further Assessment Opportunity Available

[Return to Course Index](#)

***L1** –Level 1 Literacy, **R** – University Entrance Literacy Reading, **W** - University Entrance Literacy Writing, **B** - University Entrance Literacy Both Reading & Writing

Level 1 PHYSICAL EDUCATION (CAR/KBU)

Course Outline: Students will participate in a variety of different movement contexts to develop their knowledge and skills. They will also learn new ways to promote kotahitanga both in school and the wider community. The students will also work towards understanding the relationship between movement and their Hauora through the participation in a variety of outdoor experiences such as, tough guy & gal challenge and rafting.

There will be trips associated with this course and the voluntary contribution towards the cost of these may be approximately \$300 this includes the participation in the tough guy & gal challenge, white water rafting, and any other trips for outdoor experiences.

Proposed NCEA Standards for 2025 (these will be adjusted based on student interest and class makeup):

Standard # and Version	Standard Title	Internal or External (I/E)	NCEA Level (1/2/3)	Number of Credits	*FAO? (Y/N)	+Literacy (L1/R/W/B)	Numeracy (L1)	Completed in T1, T2, T3 or T4
92016 v3	Apply movement strategies in an applied setting	I	1	5	N	N	N	Ongoing assessment all year
92017 v3	Demonstrate understanding of the application of strategies in movement	I	1	5	N	N	N	
92018 v3	Demonstrate understanding of the influence of personal movement on experiences on hauora	E	1	5	N	N	N	Assessed in T4
Is an electronic device necessary for this for this course?							YES	NO

*Further Assessment Opportunity Available

[Return to Course Index](#)

***L1** –Level 1 Literacy, **R** – University Entrance Literacy Reading, **W** - University Entrance Literacy Writing, **B** - University Entrance Literacy Both Reading & Writing

Level 1 SPORTS EDUCATION (KWL)

Course Outline: In this course you will work on your team work, through your listening skills as well as your leadership skills. You will also look at how you can work together as a team to achieve a goal/objective. Later in the year you will look at some coaching of a junior class, this will allow you to demonstrate all of your learnings throughout the year.

Proposed NCEA Standards for 2025 (these will be adjusted based on student interest and class makeup):

Standard # and Version	Standard Title	Internal or External (I/E)	NCEA Level (1/2/3)	Number of Credits	*FAO? (Y/N)	+Literacy (L1/R/W/B)	Numeracy (L1)	Completed in T1, T2, T3 or T4
3501	Demonstrate knowledge of and apply listening techniques	I	1	2	N			1
5303	Communicate in a team or group to complete a routine task	I	1	2	N			1
9677	Communicate in a team or group which has an objective	I	2	3	N			2
22768	Conduct and review a beginner level coaching session	I	2	4	N			3
27299	Describe the benefits of participation in recreation in the local community	I	2	2	N			2
Is an electronic device necessary for this for this course?							YES	NO

*Further Assessment Opportunity Available

[Return to Course Index](#)

***L1** –Level 1 Literacy, **R** – University Entrance Literacy Reading, **W** - University Entrance Literacy Writing, **B** - University Entrance Literacy Both Reading & Writing

Level 1 OUTDOOR EDUCATION (DTA/SKE)

Course Outline: Students will learn about the preparation for safe, fun participation in a range of activities in the Outdoors. In Term 1 the focus is water based including snorkelling, bodyboarding, surfing, SUP, kayaking and Waka Ama. In Term 2 the focus is Mountain biking on local tracks which includes learning basic maintenance and risk management. Students will develop tramping and camping skills as they experience at least two tramps and an overnight camp. Concepts of Kaitiakitanga and Whakawhanaungatanga are central to developing an understanding and appreciation of local NZ bush. While we aim to keep the cost of activities to a minimum, providing outdoor experiences for our students includes employing specialist instructors, some equipment hire, transport and camp accommodation. Next year we expect to pay approximately \$150 per student which will cover surfing lessons, mountain biking at Whangamata, hut accommodation and buses for transport. Students are required to provide their own suitable outdoor clothing and footwear.

Proposed NCEA Standards for 2025 (these will be adjusted based on student interest and class makeup):

Standard # and Version	Standard Title	Internal or External (I/E)	NCEA Level (1/2/3)	Number of Credits	*FAO? (Y/N)	+Literacy (L1/R/W/B)	Numeracy (L1)	Completed in T1, T2, T3 or T4
US 32842 V1	Personal Awareness and positive behaviours while in the outdoors	I	1	3	N	N	N	T1
US 32837 V1	Knowledge of introductory preparation for an outdoor activity	I	1	2	N	N	N	T1
US 20137 V2	Demonstrate MTB on grade 1	I	1	2	N	N	N	T2
US 425 V7	Participate in Day Tramps	I	1	2	N	N	N	T2
US 426 V7	Participate in overnight camps	I	1	2	N	N	N	T3
AS92019	Demonstrate understanding of influences on movement in Aotearoa New Zealand or the pacific	E	1	5	N	N	N	T4
Is an electronic device necessary for this for this course?							YES	NO

*Further Assessment Opportunity Available

[Return to Course Index](#)

***L1** –Level 1 Literacy, **R** – University Entrance Literacy Reading, **W** - University Entrance Literacy Writing, **B** - University Entrance Literacy Both Reading & Writing

LEARNING AREA: TE AO MĀORI

Level 1 TE AO MĀORI - (TBC)

Course Outline: Nau mai haere mai ki te ako Te Reo Māori. Come and learn Te Reo Māori, an official language of Aotearoa and develop a deeper understanding of Tikanga Māori while on this journey. The focus of the Level One Te Reo Māori Achievement Standards is to kōrero Te Reo Māori. The focus of the Tikanga Unit standards is to help students to connect the language and protocols of our tūpuna.

Proposed NCEA Standards for 2024 (these will be adjusted based on student interest and class makeup):

Standard # and Version	Standard Title	Internal or External (I/E)	NCEA Level (1/2/3)	Number of Credits	*FAO? (Y/N)	+Literacy (L1/R/W/B)	Numeracy (L1)	Completed in T1, T2, T3 or T4
Us27108 v4	Pōwhiri Protocols	I	1	2	N	N	N	T1
Us27106 v4	Whakapapa Terms	I	1	2	N	N	N	T2
Us16165 v7	Describe Māori Hui roles	I	1	2	N	N	N	T3
As92092 v3	Kōrerorero - Conversations	I	1	5	Y	Y	N	T2
As92093 v3	Kōrero - Te Ora o Te Reo	I	1	5	Y	Y	N	T4
Is an electronic device necessary for this for this course?							YES	NO

*Further Assessment Opportunity Available

[Return to Course Index](#)

***L1** –Level 1 Literacy, **R** – University Entrance Literacy Reading, **W** - University Entrance Literacy Writing, **B** - University Entrance Literacy Both Reading & Writing

LEARNING AREA: MATHEMATICS

Level 1 MATHEMATICS (TBC)

Course Outline: This course is for students who want to develop their mathematical skills from the basics they have learned in junior school and for students that wish to follow a Mathematical journey in the future. Learning will include:

- the PPDAC cycle and the various data types (bivariate, multivariate, time series)
- interpreting and applying mathematical and statistical literacy skills
- demonstrating mathematical reasoning using mathematical methods from Number, Algebra, Geometry, and Measurement strands.

Proposed NCEA Standards for 2025 (these will be adjusted based on student interest and class makeup):

Standard # and Version	Standard Title	Internal or External (I/E)	NCEA Level (1/2/3)	Number of Credits	*FAO? (Y/N)	+Literacy (L1/R/W/B)	Numeracy (L1)	Completed in T1, T2, T3 or T4
AS91944 V3	Explore data using a statistical enquiry process	I	1	5	Y		Y	T1
AS91945 V3	Use mathematical methods to explore problems that relate to life in Aotearoa New Zealand or the Pacific	I	1	5	Y		Y	T3
AS91947 V2	Demonstrate mathematical reasoning	E	1	5	N		Y	T4
Is an electronic device necessary for this for this course?							YES	NO

*Further Assessment Opportunity Available

[Return to Course Index](#)

***L1** –Level 1 Literacy, **R** – University Entrance Literacy Reading, **W** - University Entrance Literacy Writing, **B** - University Entrance Literacy Both Reading & Writing

Level 1 MATHEMATICS WITH STATISTICS (SRA)

Course Outline: This course is for students who want to develop their mathematical skills from the basics they have learned in junior school and for students that wish to follow a statistical journey through Mathematics. Students will learn how to interpret and apply mathematical and statistical literacy skills to make judgements from data which applies to real world contexts. Learning will include:

- the PPDAC cycle and the various data types (bivariate, multivariate, time series)
- interpreting and applying mathematical and statistical literacy skills
- demonstrating mathematical reasoning using mathematical methods from Number, Algebra, Geometry, and Measurement strands.
- interpreting and applying mathematical and statistical literacy skills to make judgements from data which applies to real world contexts.

Proposed NCEA Standards for 2025 (these will be adjusted based on student interest and class makeup):

Standard # and Version	Standard Title	Internal or External (I/E)	NCEA Level (1/2/3)	Number of Credits	*FAO? (Y/N)	+Literacy (L1/R/W/B)	Numeracy (L1)	Completed in T1, T2, T3 or T4
AS91944 V3	Explore data using a statistical enquiry process	I	1	5	Y		Y	T1
AS91945 V3	Use mathematical methods to explore problems that relate to life in Aotearoa New Zealand or the Pacific	I	1	5	Y		Y	T3
AS91946 V3	Interpret and apply mathematical and statistical information in context	E	1	5	N		Y	T4
Is an electronic device necessary for this for this course?							YES	NO

*Further Assessment Opportunity Available

[Return to Course Index](#)

***L1** –Level 1 Literacy, **R** – University Entrance Literacy Reading, **W** - University Entrance Literacy Writing, **B** - University Entrance Literacy Both Reading & Writing

Level 1 NUMERACY (ACK/CAS)

Course Outline: This course is for students who require the Numeracy co-requisite.

As part of Numeracy students will:

- formulate mathematical and statistical approaches to solving problems in a range of meaningful situations
- use mathematics and statistics to meet the numeracy demands of a range of meaningful situations
- explain the reasonableness of mathematical and statistical responses to situations.

The rest of the course will involve Level 1 Achievement Standards and will cover learning in the following areas:

- the PPDAC cycle and the various data types (bivariate, multivariate, time series)
- interpreting and applying mathematical and statistical literacy skills
- demonstrating mathematical reasoning using mathematical methods from Number, Algebra, Geometry, and Measurement strands.

Proposed NCEA Standards for 2025 (these will be adjusted based on student interest and class makeup):

Standard # and Version	Standard Title	Internal or External (I/E)	NCEA Level (1/2/3)	Number of Credits	*FAO? (Y/N)	+Literacy (L1/R/W/B)	Numeracy (L1)	Completed in T1, T2, T3 or T4
AS91944 V3	Explore data using a statistical enquiry process	I	1	5	Y		Y	T1
US32406 V3	Apply mathematics and statistics in a range of everyday situations	E	1	10	Y		Y	T2/3
AS91945 V3	Use mathematical methods to explore problems that relate to life in Aotearoa New Zealand or the Pacific	I	1	5	Y		Y	T4
Is an electronic device necessary for this for this course?							YES	NO

*Further Assessment Opportunity Available

[Return to Course Index](#)

***L1** –Level 1 Literacy, **R** – University Entrance Literacy Reading, **W** - University Entrance Literacy Writing, **B** - University Entrance Literacy Both Reading & Writing

LEARNING AREA: SOCIAL SCIENCES

Level 1 GEOGRAPHY (BKY)

Course Outline: Geography is the study of te taiao and the interconnections within. We consider the question "What Is Where, Why There, and Why Care?" so we can make sense of place. Te taiao consists of all things that make up the surrounding environment. This includes features such as rivers, mountains, people, buildings, and infrastructure. Te taiao can exist at different scales and can be located wherever we place ourselves.

Proposed NCEA Standards for 2024 (these will be adjusted based on student interest and class makeup):

Standard # and Version	Standard Title	Internal or External (I/E)	NCEA Level (1/2/3)	Number of Credits	*FAO? (Y/N)	+Literacy (L1/R/W/B)	Numeracy (L1)	Completed in T1, T2, T3 or T4
91932 v2	Demonstrate understanding of the spatial distribution of phenomena and its impacts within te taiao	I	1	5	Y	Y	N	T1
91933 v2	Explore te taiao using data	I	1	5	N	Y	N	T2-3
AS 91935 - v2	Demonstrate understanding of geographic decision-making in Aotearoa New Zealand or the Pacific	E	1	5	N	Y	N	T4
Is an electronic device necessary for this for this course?							YES	NO

*Further Assessment Opportunity Available

[Return to Course Index](#)

***L1** –Level 1 Literacy, **R** – University Entrance Literacy Reading, **W** - University Entrance Literacy Writing, **B** - University Entrance Literacy Both Reading & Writing

Level 1 HISTORY & SOCIAL STUDIES (TBC)

Course Outline: History is the study of the past in order to understand the present. This information helps make decisions that influence the future. You will study one New Zealand and one international topic. In the second part of the year, students will switch to Social Studies, and develop a thorough understanding of the rights and responsibilities that humans have toward one another and address cultural beliefs and ideas from around the globe.

Proposed NCEA Standards for 2024 (these will be adjusted based on student interest and class makeup):

Standard # and Version	Standard Title	Internal or External (I/E)	NCEA Level (1/2/3)	Number of Credits	*FAO? (Y/N)	+Literacy (L1/R/W/B)	Numeracy (L1)	Completed in T1, T2, T3 or T4
92024	Engage with a variety of primary sources in an historical context.	I	1	5	N	N	N	T1
92025	Demonstrate understanding of the significance of an historical event.	I	1	5	N	N	N	T2
92049	Demonstrate understanding of perspectives on a contemporary social studies issue.	I	1	5	N	N	N	T3
Is an electronic device necessary for this for this course?							YES	NO

*Further Assessment Opportunity Available

[Return to Course Index](#)

***L1** –Level 1 Literacy, **R** – University Entrance Literacy Reading, **W** - University Entrance Literacy Writing, **B** - University Entrance Literacy Both Reading & Writing

LEARNING AREA: PATHWAYS AND TRANSITIONS

Level 1 HUB SORTED (TBC)

Course Outline: This is all about getting yourself sorted for life as a senior student. You'll learn how to manage your wellbeing, finances and personal life, plus some coping strategies for when things get a little tough.

Proposed NCEA Standards for 2024 (these will be adjusted based on student interest and class makeup):

Standard # and Version	Standard Title	Internal or External (I/E)	NCEA Level (1/2/3)	Number of Credits	*FAO? (Y/N)	+Literacy (L1/R/W/B)	Numeracy (L1)	Completed in T1, T2, T3 or T4
US33242v1	Develop self-management and resilience strategies to maintain and/or improve own wellbeing	I	1	4	N	N	N	T1
US24709v5	Produce a budget to manage personal finances	I	1	3	N	N	N	T2
US12349v7	Demonstrate knowledge of time management	I	2	3	N	N	N	T3
US12348v5	Demonstrate knowledge of anger management	I	1	2	N	N	N	T4
Is an electronic device necessary for this for this course?							YES	NO

*Further Assessment Opportunity Available

[Return to Course Index](#)

***L1** –Level 1 Literacy, **R** – University Entrance Literacy Reading, **W** - University Entrance Literacy Writing, **B** - University Entrance Literacy Both Reading & Writing

Level 1 HUB COMMUNITY (TBC)

Course Outline: We will start by learning about team work before getting stuck into a range of hands-on projects designed to make a difference in our community. In Term 2 we will meet with the people working in our community and find out about the issues that they face, and in Term 3 we will take a look at driving law and your legal responsibilities once you're on the road.

Proposed NCEA Standards for 2024 (these will be adjusted based on student interest and class makeup):

Standard # and Version	Standard Title	Internal or External (I/E)	NCEA Level (1/2/3)	Number of Credits	*FAO? (Y/N)	+Literacy (L1/R/W/B)	Numeracy (L1)	Completed in T1, T2, T3 or T4
US33245v1	Interact with people at work and in the community	I	1	5	N	N	N	T1
US548v10	Demonstrate knowledge of the effects of alcohol and drugs	I	1	3	N	N	N	T2
US30907v2	Demonstrate knowledge of New Zealand Police	I	2	3	N	N	N	T3
US3462v7	Demonstrate knowledge of traffic law	I	2	3	N	N	N	T4
Is an electronic device necessary for this for this course?							YES	NO

SUPER TUESDAY OPTIONS

Super Tuesday Courses are half year courses and are designed to give students the opportunity to learn new skills, complete courses in and outside of school and to work with students at multiple levels.

Shark Tank	KRI	Are you ready to unleash your creativity and innovation? Have you got a product or business in mind that you would like to develop and test to the market? This is your opportunity to develop business acumen, problem-solving and innovation skills. Your product could be anything. You will learn to demonstrate the value your product brings to market as the course will finish with the Dragons Den competition, where business experts will choose the top products. This course will help bring your unique ideas to life and put you on the business stage. How good will that look on your CV?
Go Girl!	SKE	Was building confidence one of your goals to work on this year? Did you want to start trying new things with like minded people? This course will help you explore different mindful and low intensity exercises to help you grow healthy and long lasting habits. You can expect to walk the beach, learn to use gym equipment, learn about what makes you you, and maybe go downtown for lunch every now and then. We will aim to improve self esteem and teach empowerment tools to aid in lifelong well-being.
TOI - Wearable Arts Competition	PKI	Wearable Arts explores the intersection of fashion, art, and design by creating unique and innovative garments and accessories. This class encourages students to think outside the box, fostering a deeper understanding of self-expression and the boundless possibilities within wearable art. Each student will design, create and exhibit their final outcome at the Waikato TOI wearable art competition.
Culinary Arts	SFI	Go for Gold ! Are you ready to take your culinary journey to the next level ? Commit yourself to the search for excellence while creating and perfecting dishes to take to the Waikato Culinary Fare. Please note this is a compulsory competition for this Super Tuesday and you will need to be available to compete on the day .
From Zero to Hero	SFI	Do you struggle in the kitchen ? Are noodles your go to meal? Learn how to feed yourself with flair while cooking your way around the world . Nz is a melting pot of cultures , let's explore them through Kai !
Create a Space	GWY	Are you tired of not having a space to eat your lunch, or somewhere to chill and chat in the sun? Join us to design a great new space in our kura. A place to call your own, to sit and eat without the usual balancing act of trying to hold and eat at the same time. The project can be as big or as compact as your own imagination. Use your creative side to come up with some fantastic solutions and learn some great practical skills using hard materials along the way.

Tools for life	GWY	Weld it, sand it, turn it, join it, bend it, smelt it, hammer it, felt it ! Wood, metal, plastic, perspex, wool ! Pick your material and your skills and get stuck in. From garden instruments, fishing gear, chopping boards, pizza cutters and light fittings for your own work space. Have a crack and give it a go!
Hair and Beauty	KLI	Do you have an interest in the beauty industry? In this course we will look at a range of beauty techniques from makeup application, nails, massage etc. During this course you will complete practical and theory units in relation to the beauty industry. You will also visit local hair and beauty establishments and travel to VARDA in Tauranga to explore tertiary courses in this field.
Outdoor Pursuits	KBU/SKE	For those who have a thirst of being active in the outdoors and a sense of adventure. Students taking this class will learn about planning, preparing and participating in a range of outdoor activities in a student driven environment. They will learn about what is involved in booking activities for a group and well as the risk management around these types of planned outings. Students will gain experience in event planning and trip management which will give them life long skills beyond their schooling. This class is aimed at students who want to do outdoor education but does not fit into their timetabled courses.
Adventure Tourism	BKY/KBU	Join our ultimate outdoors adventure course for an unforgettable journey through nature's playground! Dive into the thrill of surfing the waves, challenge yourself with invigorating tramping trails, reel in excitement with hands-on fishing, explore scenic waterways with sea kayaking, and tackle rugged terrain on exhilarating mountain biking trails. Perfect for adventurers of all levels, this course blends excitement with nature, offering a comprehensive experience that promises to test your skills and ignite your spirit of exploration.
Media Masters	KRI	This programme is designed for budding broadcasters who want to explore the skills needed to enter the media industry in Aotearoa. Media Masters covers an introduction to various media platforms including print, radio, television and digital media. The course will provide insights into areas such as presenting, news gathering, writing commercials, promotions, marketing and sales. Industry professionals will also help students to develop an understanding of the media landscape.
Kapa Haka (full year course)	TBC	Yr 7 - 13 to promote our cultural heritage in a tuakana / teina role model. Tamariki who opt into this mahi will be in for the whole year. Learning waiata , haka, tira and pau that they will represent the kura in for Matariki / Hauraki and other cultural events throughout the year.
Gateway	CGR	Ready to start finding your career pathway direction and taking action? Gateway enables you to have a go at a career pathway that you are interested in, find out if it is right for you or try something new. A component of the Gateway program for Year 11 rangatahi is completing an employability skills workshop and Year 12-13 completing a variety of Health and Safety workshops.

ADDITIONAL COURSES

Waihi College offers some additional courses to the traditional school subjects. Below are a selection of courses that are available:

WINTEC Trades Academies	<p>The Waikato Trades Academy (WTA) is funded by the New Zealand Government to provide secondary students with the opportunity to study at both school and Wintec. WTA gives students a head start; gaining specific and practical experience and skills in an industry-based setting, and the opportunity to move directly into a job, apprenticeship, or further study, on completion of secondary school.</p> <p>Students must be aged 15 or over at the start of the calendar year, be enrolled in a secondary school and be in Year 11, 12 or 13.</p> <p>Courses for 2025 include:</p> <ul style="list-style-type: none">• Manufacturing and Technology (Level 2)• Construction and Infrastructure (Level 2) <p>Additional Courses that may be available for 2025 include:</p> <ul style="list-style-type: none">• Landscaping (Level 2)• Animal Care (Level 2) <p>If you are interested in any of these courses, please contact Carolyn Graveson (Pathways and Careers) by emailing carolyng@waihicol.school.nz</p>
PCTI Food and Manufacturing	<p>Whether you are looking to get a job in the food industry, start a small business or develop a food concept, this course is for you. The programme combines food, business/market and manufacturing concepts into one course. This course is a 'gate to plate' concept ensuring that graduates are familiar with factors influencing food products, quality, packaging and storage in the marketplace.</p> <p>This course is offered by Pacific Coast training Organisation in partnership with Waihi College and offers approximately 28 Level 2 credits.</p> <p>This course runs on a Tuesday so students will not select a Super Tuesday Course. The course is run out of the Oceana Gold Centre opposite Waihi Central School.</p> <p>If you are interested in this courses, please contact Carolyn Graveson (Pathways and Careers) by emailing carolyng@waihicol.school.nz</p>
Te Kura	<p>Te Kura (Correspondence) is an online platform that offers students the opportunity to complete a subject online. This is normally only taken up by students in Year 12 or 13 who have a strong academic record and self management.</p> <p>Te Kura offers students the opportunity to take on subjects that are not offered at Waihi College or if there is a clash in subjects that students wish to complete.</p> <p>For a full selection of subjects offered by Te Kura please click on this link or type 'Te Kura Subjects' into your browser.</p>

SUBJECT SELECTION - students choose SIX subjects and YOUR TOP 5 Super Tuesday Courses **NAME:**_____

Line ONE	Line TWO	Line THREE	Line FOUR	Line FIVE	Line SIX
Mathematics (SRA)	HUB Sorted (TBC)	Mathematics (TBC)	English (JBA)	Drama (IBE)	Hospitality (TBC)
Numeracy (ACK)	Art Design (PKI)	Numeracy (CAS)	Literacy (MWL)	Engineering (GWY)	Music (ERA)
Science (NCL)	Health (SKE)	Digital Technology (JST)	Science (JMK)	English (PBU)	History & Social Studies (TBC)
Food Technology (SFI)	Te Ao Māori (TBC)	Horticulture (BWE)	Physical Education (KBU)	Literacy (JBA)	HUB Community (TBC)
Outdoor Education (DTA)	Geography (BKY)	Outdoor Education (SKE)	Hard Materials (PRY)	Physical Education (CAR)	Sports Education (KWL)
			Te Ao Māori (TBC)		

[Return to Course Index](#)

**Please note that these subject lines are subject to change based on student numbers and/or teacher availability*

SUPER TUESDAY COURSES (rank from 1 (most preferred) to 5)	
SEMESTER ONE	SEMESTER TWO
Culinary Arts Adventure Tourism Create a Space Shark Tank Go Girl! Wearable Arts Hair and Beauty Academy (full year course) Gateway	Zero to Hero Tools for Life Outdoor Pursuits Media Masters Hair and Beauty Academy (full year course) Gateway Studious Studio

Student Signature:_____

Parent/Caregiver Signature:_____