

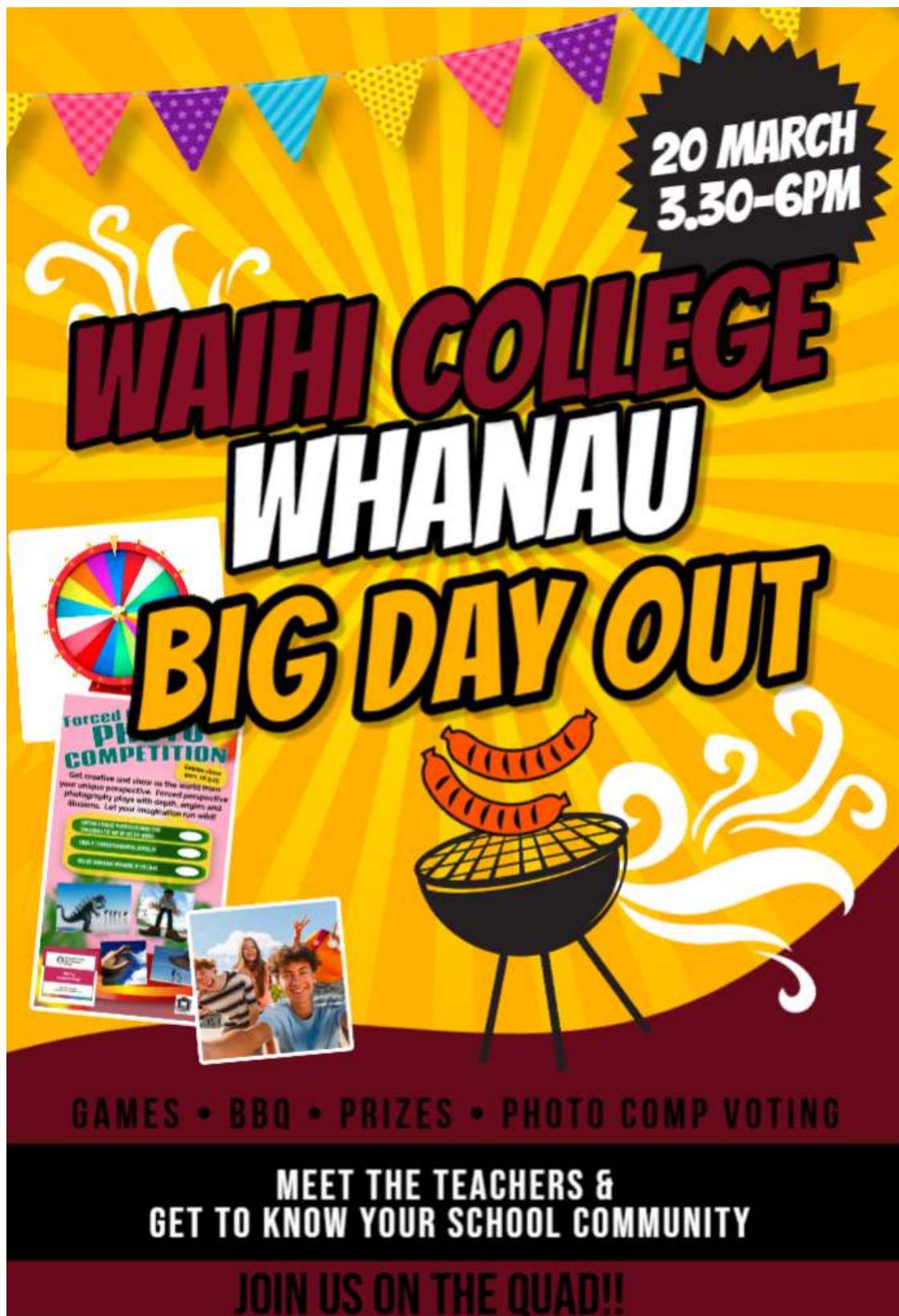
# WAIHĪ COLLEGE NEWSLETTER

---

ISSUE 5 | 2025

## WHANAU MEET & GREET - THE BIG DAY OUT: 20th March

Waihi College is looking forward to hosting the Big Day on 20th March from 3.30pm till 6pm. It will be held on the quad and will involve a sausage sizzle, spot prizes, entertainment, games, department showcases and photography competition voting. Please come and along to join us for this fun and informal event to get to know your student's teachers and school community.



## PRINCIPAL'S COMMENT

Kia ora Whanau

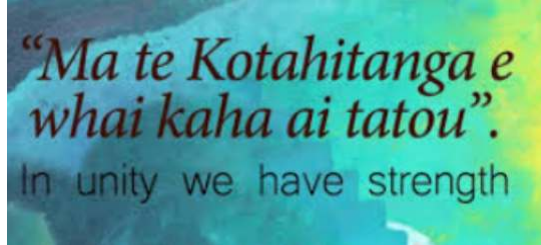
This term is shaping up to be incredibly vibrant and full of opportunities for our students, all underpinned by our school-wide focus on Kotahitanga – unity, togetherness, and a sense of shared purpose. We are truly committed to fostering a strong community where everyone feels valued and supported.



I'm particularly excited about the upcoming leadership camp for our student leaders. This will be an invaluable experience, providing them with the tools and inspiration to lead with confidence and integrity. We are also incredibly fortunate to have some amazing speakers from our community join us, sharing their insights and experiences on leadership. I know our students will benefit greatly from their wisdom and guidance.

It was also wonderful to hear the positive feedback from our ex-students who recently returned from their Outward Bound adventure. Their stories of resilience, teamwork, and personal growth are truly inspiring and a testament to the character of our young people. This term is packed with opportunities for all our students to challenge themselves and grow. Our school production is in full swing, and the energy and creativity on display are fantastic! We also have a variety of trips and excursions planned, designed to push our students beyond their comfort zones and expand their horizons.

Our learning programs are operating at full throttle, with teachers working tirelessly to ensure every student reaches their full potential. We have implemented various interventions and individual pathway plans to provide targeted support and address the unique needs of each learner..



If you have any questions about the programs and support we offer your young person, please don't hesitate to reach out to us. We are always happy to discuss how we can best support their learning journey. As part of our Kahui Ako (education community), we are committed to looking at the long-term pathways for our young people. We are thrilled to announce that later this year, we will be showcasing the stories of some of our successful community members who have grown and flourished in Waihi. This will be a wonderful opportunity to celebrate the achievements of our people and inspire our current students.

We truly believe that Waihi is a fabulous town to grow, learn, be successful in, and contribute to. We are proud to be a part of this community and are committed to providing our students with the best possible education and opportunities. Thank you for your continued support.

Nga manaakitanga,  
Briar

## SCHOOL WIDE

---

### ATHLETICS

Waihi College's Athletics Day was a fantastic success, with a gorgeous sunny day setting the perfect scene for competition and school spirit. Students participated enthusiastically across all events, showcasing their athleticism, determination, and house pride. Empire emerged victorious, claiming first place, followed by Amaranth in second, Royal in third, and Dominion in fourth. However, there is still the 3000m race to be run, so house placings will be updated once results are in.

It was great to see so many students getting involved and giving it their all. Full results will be published in the Sports Newsletter and on the Waihi College Facebook Sports page. As always, you can check out the photos on the [School Photos](#) page.

---

# REHEARSAL SCHEDULE

Rehearsals are well underway for the upcoming Mamma Mia and a letter was emailed to caregivers and students with a full rehearsal schedule last week. The schedule has also been added to the Mamma Mia Google Classroom. If you're unsure of the schedule or have any questions, please chat to Mr Randell or Ms Berry .

WAIHĪ COLLEGE

# MAMMA MIA!



In support of Neurodiversity Celebration Week, we are holding a Forced perspective Photo Competition. We want you to capture a forced perspective photo that challenges the way we see the world. Get creative and show us the world from your unique perspective. Forced perspective photography plays with depth, angles and illusions. Let your imagination run wild!

Email your entries to Wendy on:  
**wendys@waihicol.school.nz** with  
your name and house.



## Forced Perspective PHOTO COMPETITION

Entries close  
9am, 18.3.25

Get creative and show us the world from your unique perspective. Forced perspective photography plays with depth, angles and illusions. Let your imagination run wild!

- CAPTURE A FORCED PERSPECTIVE PHOTO THAT CHALLENGES THE WAY WE SEE THE WORLD
- EMAIL IT TO WENDYS@WAIHICOL.SCHOOL.NZ
- INCLUDE YOUR NAME AND HOUSE IN THE EMAIL



# Neurodiversity Celebration Week 2025 Events

Monday 17	Tuesday 18	Wednesday 19	Thursday 20	Friday 21
<b>09:00 - 10:30</b> <b>Celebrating Different Minds: An Introduction to Neurodiversity</b>	<b>09:30 - 10:30</b> <b>Neurodiversity at Work Q&amp;A: Products &amp; Customer Services</b>	<b>08:30 - 10:00</b> <b>Neurodiversity and Nutrition - Food For Thought</b>	<b>09:00 - 10:30</b> <b>Is Neurodiversity a Community? Exploring Identity, Inclusion, and Intersectionality</b>	<b>09:00 - 10:30</b> <b>Late Diagnosed Neurodiversity in Women</b>
<b>11:30 - 13:00</b> <b>Breaking Barriers: The Power of Language in Neurodiversity</b>	<b>11:30 - 13:00</b> <b>Neurodivergence &amp; LGBTQIA+: A Conversation on Identity, Intersectionality &amp; Empowerment</b>	<b>10:30 - 12:00</b> <b>Shaping Neurodiversity through Innovation &amp; Technology</b>	<b>11:00 - 12:30</b> <b>Building the Neuroinclusive Classroom of Tomorrow...Today!</b>	<b>11:30 - 13:00</b> <b>Parents &amp; Carers - Supporting Children Through Times of Transition</b>
<b>13:30 - 15:00</b> <b>Neurodivergence Seldom Travels Alone: The Unexplored World of Co-Occurring Conditions</b>	<b>13:30 - 15:00</b> <b>Empowering Neurodiversity in the Workplace</b>	<b>13:00 - 14:00</b> <b>Neurodiversity at Work Q&amp;A: Designing Neuro-inclusive Working Environments</b>	<b>13:30 - 15:00</b> <b>Workplace Burnout: How to Reclaim Your Energy as a Neurodivergent Woman at Work</b>	<b>13:30 - 15:00</b> <b>Is the Business World leading society on Neuroinclusion?</b>
<b>15:30 - 17:00</b> <b>Neurodiversity: Where can HR Professionals make a difference?</b>	<b>15:30 - 17:00</b> <b>Neurodiversity &amp; Mental Health - Acquired Neurodivergence</b>	<b>14:30 - 16:00</b> <b>Person-Centered Management for Neuroinclusion</b>	<b>15:30 - 17:00</b> <b>Navigating Neurodiversity &amp; the Criminal Justice System</b>	<b>15:30 - 17:00</b> <b>Celebrating Different Minds: Future Directions and Continuing Conversations</b>
<b>19:00 - 20:30</b> <b>Perspective of Young People on Neurodiversity</b>	<b>19:00 - 20:30</b> <b>Navigating Neurodiversity: Parental Perspectives, Professional Insights, and Policy Changes in 2025</b>	<b>16:30 - 18:00</b> <b>What makes spaces and places neuroinclusive in education?</b>	<b>19:00 - 20:30</b> <b>Neurodiversity around the World</b>	 <b>Neurodiversity Celebration Week</b> March 17 - 23, 2025

## LEVEL 1 OUTDOOR EDUCATION

It was a pleasure spending time with our Level 1 Outdoor Education class down at Coffey's swimming hole last week. Both classes are learning about personal awareness and positive behaviours in outdoor activities. Evidence of their understanding of the difference between encouragement and peer pressure was clear, resulting in students challenging themselves in a fun supportive environment. Congratulations to all who took the leap!



## COMMUNITY NOTICES

# WAIHĪ COLLEGE

## FUNDRAISER FOR JAKE NAGEL

Bake sale on the quad  
Wednesday 12th March



## COMING UP



THE SCHOOL LIBRARY ASSOCIATION OF  
NEW ZEALAND AOTEAROA  
TE PUNA WHARE MĀTAURANGA A KURA

### Poster Competition

#### Calling all artists/designers:

The School Library Association of New Zealand Aotearoa (SLANZA) is looking for a poster to promote Aotearoa School Library Week 2025 (ASLW25).

We are looking for student artists to design an A3 portrait poster for ASLW25.

We would like the poster to reflect many aspects of a school library, and appeal to both tamariki and rangitahi. What makes a school library special? The books, the games, the people? Gathering with friends to share joy over a book, insta, or exploding kittens?

The poster must have space for us to add our logo and include the following details:  
Aotearoa School Library Week 2025  
4-8 August

The winner will receive a \$200 Prezzy Card.

Please send an electronic copy of your artwork by email to:  
auckland@slanza.org.nz  
Subject line: ASLW25 Artwork  
Entries must be received by 11:59pm on Friday 2 May 2025

Judges decision is final, no correspondence will be entered into.

### SLANZA (School Library Association New Zealand Aotearoa)

SLANZA would like to offer students the opportunity to design a poster for Aotearoa School Library Week 2025 and win a \$200 pressy card.

Artwork will be used for promoting ASLW25 and on all collateral for this year.



WAIHĪ COLLEGE

# SAVE THE DATE

**Waihi College Ball**  
**17th May**

**More info coming soon!**

**[www.waihicol.school.nz](http://www.waihicol.school.nz)**

## NURSE'S CORNER

---

**WAIHI COLLEGE HAS A SCHOOL NURSE  
AVAILABLE MONDAY-THURSDAY ALL DAY**

POP IN TO THE BUILDING NEXT TO THE TREE OF  
LIFE

WALK IN APPOINTMENT, OR TEXT/PHONE TO  
0272983787

LOOK FORWARD TO SEEING YOU IF YOU HAVE  
ANY HEALTH NEEDS OR QUESTIONS  
MARGIE GOLDSWORTHY / SCHOOL NURSE FOR  
WAIHI COLLEGE



Ngā mihi, with kind regards  
Margie (She/Her)

**Margie Goldsworthy | SCHOOL NURSE**

**M: 0272983787**

**E: [margie.goldsworthy@pinnacle.health.nz](mailto:margie.goldsworthy@pinnacle.health.nz)**