

# WAIHI COLLEGE NEWSLETTER

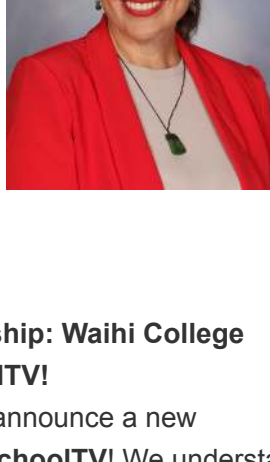
ISSUE 9 | 2025

## PRINCIPAL'S COMMENT

Kia ora Whanau

As we settle into the rhythm of 2025 here in Waihi, I'm happy to share some exciting news and updates from our Kahui Ako and the wider school community.

A significant development within the Waihi Kahui Ako is the new co-leadership of Rachael Coli and myself. We have combined their strengths and passion and are eager to guide our Kahui Ako space throughout 2025.



We are incredibly fortunate to have the collaborative energy of a great team, and vision driving our collective efforts. We are also making great strides with our community-led initiatives, all designed to strengthen education and wellbeing across our region. It's inspiring to see the commitment and collaboration within our community to ensure the best possible outcomes for our young people. Our focus remains firmly on fostering hauora (wellbeing), building strong communities, strengthening connections, and forging powerful partnerships both within the education sector and across the wider Waihi community. We are deeply committed to creating diverse pathways to success, ensuring that every student's holistic needs are met and nurtured. We firmly believe that by continuing to work together – schools, families, and the wider Waihi community – we can empower our young people to flourish, reach their full potential, and contribute meaningfully to our vibrant community, both here in Waihi and beyond.

We look forward to sharing more updates on our progress throughout the year and continuing this important journey together.

### Shaping Our Future: Your Input on Our School Vision

Looking ahead, we are actively working on shaping our school vision for the next few years. We believe it's crucial that this vision reflects the aspirations and values of our entire community. Therefore, we are keen to hear from you regarding what you see as important moving forward. What are our collective intentions, dreams, and hopes for the future of our young people and our community? We are aiming for a vision statement that is short, sharp, and punchy – embodying all of our aspirations. I am keen to hear from you! **Please reach out and share your aspirations for our young people, so your voice can be heard.**

### Reminder: Teacher Only Day

Please don't forget that our last day of this term, **Friday, 11th April**, is a **Teacher Only Day**. We are closed for instruction on this day - please support us, by ensuring you have plans for any students that need care. We are really excited to host Kathryn Berkett join us - as she teaches the teachers! Here is a link to some of her work - check it out! <https://www.lifeeducation.org.nz/neuroscienceandresilience>

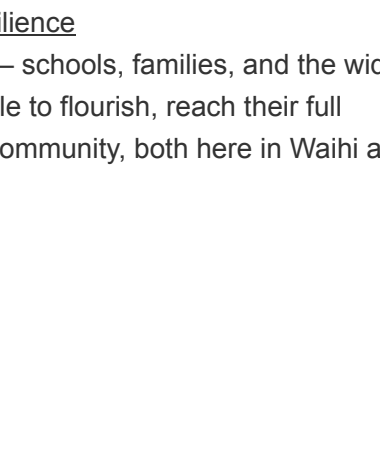
We firmly believe that by continuing to work together – schools, families, and the wider Waihi community – we can empower our young people to flourish, reach their full potential, and contribute meaningfully to our vibrant community, both here in Waihi and beyond.

Nga manaakitanga,  
Briar

### Exciting Partnership: Waihi College Launches SchoolTV!

We are thrilled to announce a new partnership with **SchoolTV!** We understand that parenting doesn't come with instructions, and SchoolTV is an invaluable wellbeing resource implemented at our school to help support you in the challenges of modern-day parenting, particularly relating to youth mental health and wellbeing. Parenting is a learning journey, and SchoolTV supports families by providing credible information from trusted sources with practical strategies to help alleviate some of the challenges being faced by young people today. You can watch video interviews with leading wellbeing specialists and browse a comprehensive library of resources. Each topic is accompanied by factsheets, podcasts, books, articles, apps, and other helpful videos.

This award-winning resource helps families build relationships, foster connections, enable understanding, and break down barriers to navigate a pathway towards better mental health and wellbeing for young people. It will assist you in starting those conversations on topics that can sometimes be awkward or difficult to tackle. Parents and caregivers are the greatest influence on a young person's life, and SchoolTV focuses on empowering confident parenting. We strongly encourage you to explore SchoolTV – you can find the link on our school website.



## SCHOOL WIDE



## BAKE SALE A HUGE SUCCESS

Thank you so much to everyone that was involved with our bake sale today. We have such a beautiful community. The money is yet to be tallied, but including the cake which auctioned at \$130 (wowzers!), we'll have around \$800. Every cent will be going to the Rolleston-Bryan whānau. Thanks so much everyone.

## WAIHI LEOS CLUB

The Waihi Leos Club is now the second biggest in the Lions Club District 202L (comprising of Waikato, Bay of Plenty and King Country!). They do such incredible work around the school and wider community and we are so proud of them. Massive thanks to Anne Marie Spicer, our Leos coordinator, who makes all the magic happen.

Waihi NEWS

**Waihi Leo's have great plans ahead**

The Lions Club of Waihi is very proud of its Waihi College Leo Club project, which was started in 2015 by our first Leos and teacher at the school, Current Co-Leader Anne Marie Spicer. It has been in the role since 2018 and has seen the Club grow from about 10-17 members a year to its current membership of 30 Leos and counting!

This year the Waihi Leos Club celebrates its 10-year anniversary. Making the Club the second largest in our district of Bay of Plenty, Waikato and the King Country.

Some of the projects Leos have been **ANY HEALTH NEEDS OR QUESTIONS** involved in are: a fund-raising dinner where Leos helped set up the event and acted as waiters on the night - a huge hit with the dinner guests! They've also helped at local charity events like the Santa Dash and decorated the Santa Dash and the Christmas at the Lake, and they regularly help out at Waihi College fundraising events too. We have the recent bake sale, in aid of local life, year 11 and 12, which is being treated for Leukaemia.

Current Leos Club President Greta says that this year looks to be the Club's biggest yet: "At our first meeting of the year, we agreed that we should continue to collect for the Health Club for Kids, which is doing a Food Drive in March/April, coordinated by our Vice President Zoe, and we're helping with the Lake again, and we're also keen to support our Leos Club with the 10th Day this year - asking students to dress up in yellow and donate a coin on August 29th. We'll be celebrating Leos Awareness Month and our 10th Anniversary the month of a Leos Club dinner where a few of us will speak about what it means to be a Leo, our plans for the year, and also maybe something for what it's like to be a teenager in this modern world."

Anyone can join Leos - The Club has students who joined from Year 7 to 13. All members who are home-schooled, if you'd like to be a member, you can contact Leos Advisor Anne Marie at [anemarie@leos.org.nz](mailto:anemarie@leos.org.nz). If you are interested in joining the Leos Club of Waihi, you can get in touch with Membership Coordinator Mike Hayden at [mhayden@leos.org.nz](mailto:mhayden@leos.org.nz).

## YEAR 7 SCHOOL CAMP AT BOWENTOWN

Our Year 7 Tainui students recently enjoyed an adventure at School Camp in Bowentown! The camp was packed with exciting activities that kept the students busy for three days. Students had the chance to explore the area through cave exploration, bike rides and fishing! Students participated in team-building games that challenged their communication and collaboration skills, helping to strengthen bonds with their peers.

The students embraced the experience of sleeping in tents, immersing themselves fully in the outdoor environment. The combination of outdoor activities, teamwork, and shared responsibilities made for a memorable and enriching camp experience for all. A huge thank you to everyone who made this camp possible, and to our students for their enthusiasm and positive attitude throughout the entire trip!



**PLEASE LOOK OUT FOR WAYS TO HELP US REACH OUR \$30K TARGET**

**TAIWAN FUNDRAISER**

To showcase and spread Waihi College Manaakitanga to our sister schools in Taiwan and to help our rangitahi experience the world and inspire their future pathways

**TAIWAN FUNDRAISER**

We are looking forward to sending twenty of our students overseas later in the year to showcase and spread Waihi College manaakitanga to our sister schools in Taiwan and to help our rangitahi experience the world, inspiring their future pathways.

If you think you can help, please get in touch.

## GOLDEN VALLEY - WAIHI EAST SCHOOL DROP OFF & PICK UP

Term one has seen a large number of students using the morning drop off at Waihi East School as a pickup point for travel to Waihi College. This has led to overcrowding on the bus and in one instance, the driver stopped the bus due to people forming a standing queue on the bus while travelling up Moresby Road. Waihi College does not have any pickup or drop off points at Waihi East School as Waihi East falls within the 4 Kilometre bus exclusion zone as directed by the Ministry of Education.

**WAIHI COLLEGE**

**MAMMA MIA!**

**IMPORTANT BUS INFORMATION**

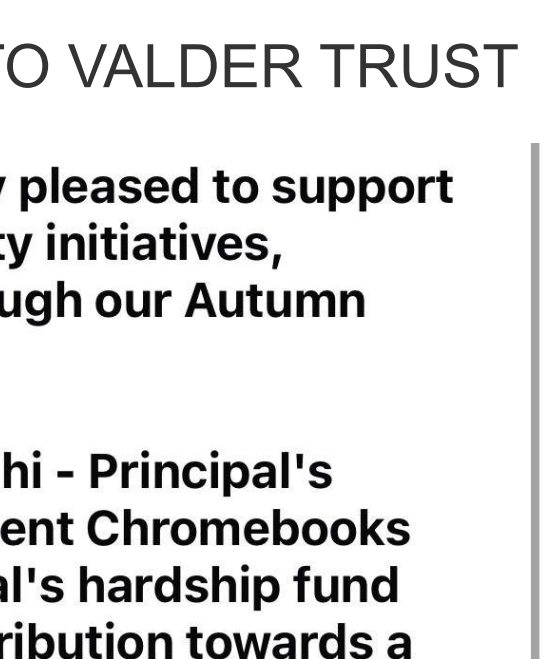
**GOLDEN VALLEY - WAIHI EAST BUS**

Starting next term students that are ineligible for bus travel, will not be allowed access onto the Golden Valley bus run at Waihi East School.

## COMMUNITY NOTICES

### SONGWRITING COMPETITIONS

There are currently 2 major competitions for student songwriters to enter. The Smokefree Rock Quest and Play it Strange - with several categories in each. Closing dates for each is in a month's time (end of May). There is also fantastic prizes for students going through to the next rounds. Please see Mr Randell for more details. Student can enter as soloists or as a band and there are also opportunities for a Maori waiata.



## MASSIVE THANKS TO VALDER TRUST

**The Valder Trust is very pleased to support the following community initiatives, contributing \$100k through our Autumn grants.**

- St Joseph's School Waihi - Principal's hardship fund and student Chromebook**
- Waihi College - Principal's hardship fund**
- Living Well Trust - contribution towards a youth program**
- Salvation Army, Waihi Corps - assistance with running costs**
- Karangahake School - contribution toward a new playground**
- Grey Power Paeroa - assist volunteers to attend NZ AGM**
- Victoria Battery Tramway - digital display frames**
- Age concern Paeroa - assist with Co-Ordinators wages**
- Life Hope Trust Waihi - assistance with running costs**
- Heathington House - contribution toward heating upgrade**
- Waipuna Hospice - help with operating costs**

**Our Trust helps community groups, schools and organisations making a difference in the Ohinemuri district. Please email us on [valderohinemuritrust@gmail.com](mailto:valderohinemuritrust@gmail.com)**

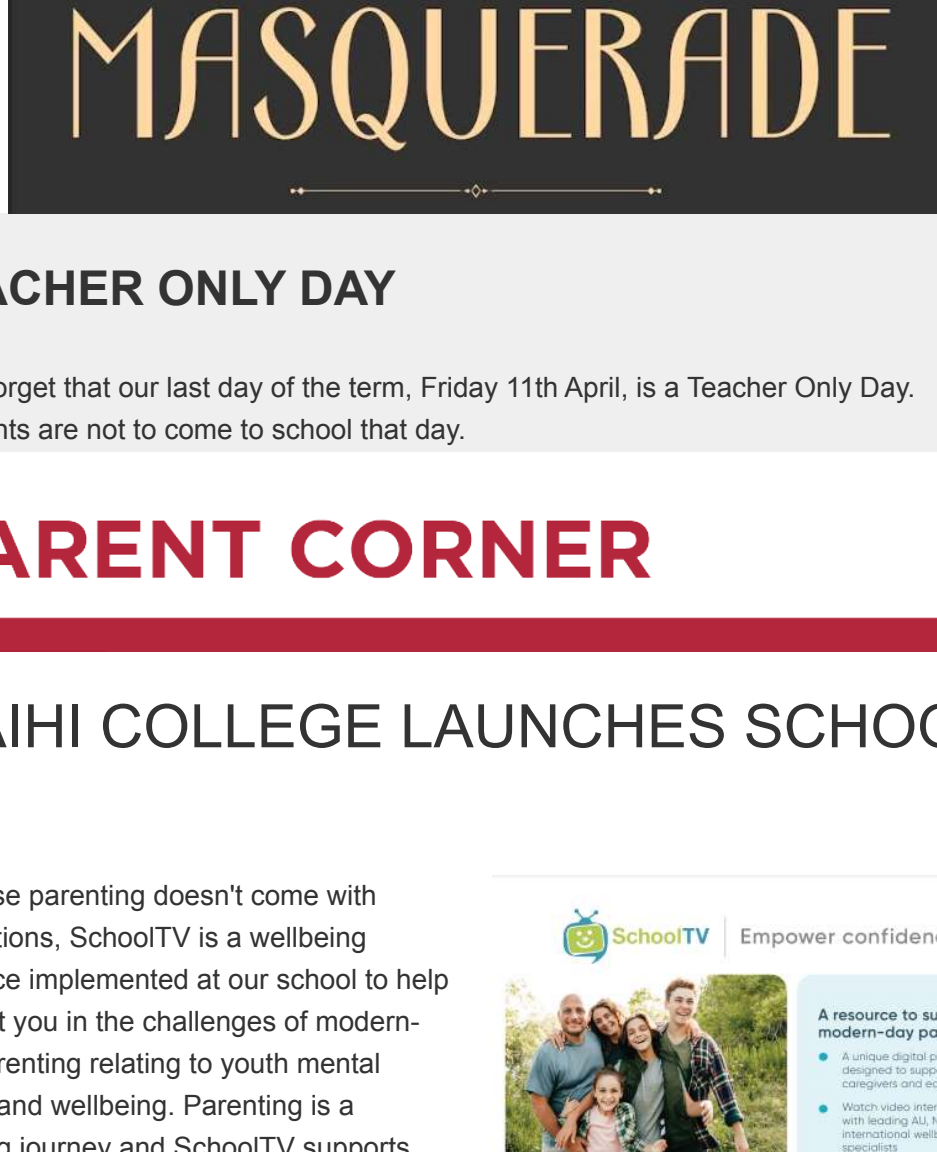
## COMING UP

## WAIHI COLLEGE BALL: ALL YOU NEED TO KNOW

The upcoming Waihi College Ball is on 17th May at the Waihi Beach Surf Club from 7pm till 10.30pm. The theme for this year's Ball is "Masquerade". There will be a DJ, Photobooth, formal photographer, wandering photographer, food and drinks and it's always an amazing night.

All Year 11 and 12s wanting to attend the Ball need to complete an application form and return it to the office by 2nd May for approval from SLT. All Year 13s wanting to attend, need to pop their name on the Year 13 list along with their partners name if they are bringing one from outside Waihi College.

Ball Applications can be collected from the office or downloaded from the Latest News section of our website and need to be back from 2nd May. Tickets are \$80 each per person and will be on sale from 5th May. Tickets will be collected from the office at the time of payment.



### TEACHER ONLY DAY

Don't forget that our last day of the term, Friday 11th April, is a Teacher Only Day. Students are not to come to school that day.

## PARENT CORNER

## WAIHI COLLEGE LAUNCHES SCHOOL TV

Because parenting doesn't come with instructions, SchoolTV is a wellbeing resource implemented at our school to help support you in the challenges of modern-day parenting relating to youth mental health and wellbeing. Parenting is a learning journey and SchoolTV supports families by providing credible information from trusted sources with practical strategies to help alleviate some of the challenges being faced by young people today. Watch video interviews with leading wellbeing specialists and browse a library of resources. Each topic is accompanied by factsheets, podcasts, books, articles, apps and other videos.

**SchoolTV** Empower confidence.

**Because parenting doesn't come with instructions**

Parenting today presents our new challenges. Like never before, parents are seeking new, fact-based solutions. SchoolTV delivers credible and current information from wellbeing experts via an online digital platform. Browse through this resource library and find practical strategies on a variety of topics that address the challenges of raising happy, healthy, resilient young people in our ever-changing world.

Explore SchoolTV today! Now available at your school.

Margie will be available over the holidays should anyone need her - please just give her a call.

**WAIHI COLLEGE HAS A SCHOOL NURSE AVAILABLE MONDAY-WEDNESDAY 8.30AM—4.30PM FOR YEAR 9-13 AVAILABLE FOR YEAR 7-8 IN EMERGENCIES**

POP IN TO THE BUILDING NEXT TO THE TREE OF LIFE WALK IN APPOINTMENT, OR TEXT/PHONE ON 0272983787

LOOK FORWARD TO SEEING YOU IF YOU HAVE ANY HEALTH NEEDS OR QUESTIONS MARGIE GOLDSWORTHY | SCHOOL NURSE FOR WAIHI COLLEGE

**the SCHOOL Nurse**

Nga mihi, with kind regards Margie (She/Her)

**Margie Goldsworthy | SCHOOL NURSE WAIHI**

**M: 0272983787**

**W: [www.pinnacle.co.nz](http://www.pinnacle.co.nz)**