

CAREERS & FUTURE PATHWAYS — with Carolyn & Jade



THE UNIVERSITY OF
WAIKATO
Te Whare Wānanga o Waikato



THE UNIVERSITY OF WAIKATO INFORMATION

Hamilton Campus Open Day. Friday, 23rd May.
Year 12 & 13 students, book your seat on the bus now!
There is a sign up sheet on the Gateway office table.

Open Day

Explore study options, take a campus tour, view the Halls of Residence, talk to staff and experience what it is like to be a student at Waikato.

LAW Open Day for Year 12-13. July, Day TBC.

Are you interested in a career in law? Study a Bachelor of Laws degree in one of the best law schools in New Zealand. Look deeper to find out why laws are made, who made them, how they work and how to change them. Register your interest with Ms G as soon as possible.

PSYCHOLOGY AND CRIME SCIENCE Year 12-13. Tuesday, 24th June, 9am—2.30pm. Register by 4 April.

Study an undergraduate or postgraduate **psychology** degree or diploma at Waikato and immerse yourself into a community full of innovative thinkers. Psychology is one of the most important and critical topics in modern society. **Crime Science** is a multi-disciplinary, evidence-based problem-solving field that focuses on understanding the drivers of crime, to provide tools and information that will reduce victimisation and increase the safety and quality of life for New Zealanders. Open Day for Year 12-13. July, Day TBC.



Experience Engineering (E²) at Waikato Uni

Tauranga campus - Tuesday 1st July 2025

The School of Engineering invites you to attend Experience Engineering! This on-campus, FREE event will take place at our purpose built-labs in Tauranga and will be delivered by some of our leading engineers. This is an opportunity to get hands-on with robotics, structural design, materials and more!

We offer a range of experiences to support engagement with our schools and communities to demystify and get young people excited about a career in engineering.

To Register: <https://www.waikato.ac.nz/about/faculties-schools/engineering/future-engineering-students/experience-engineering/>

CAREERS & FUTURE PATHWAYS — with Carolyn & Jade



VICTORIA UNIVERSITY OF WELLINGTON INFORMATION EVENINGS

Wednesday, 28 May, 6pm-7pm. Mercury Baypark, Mt Maunganui.

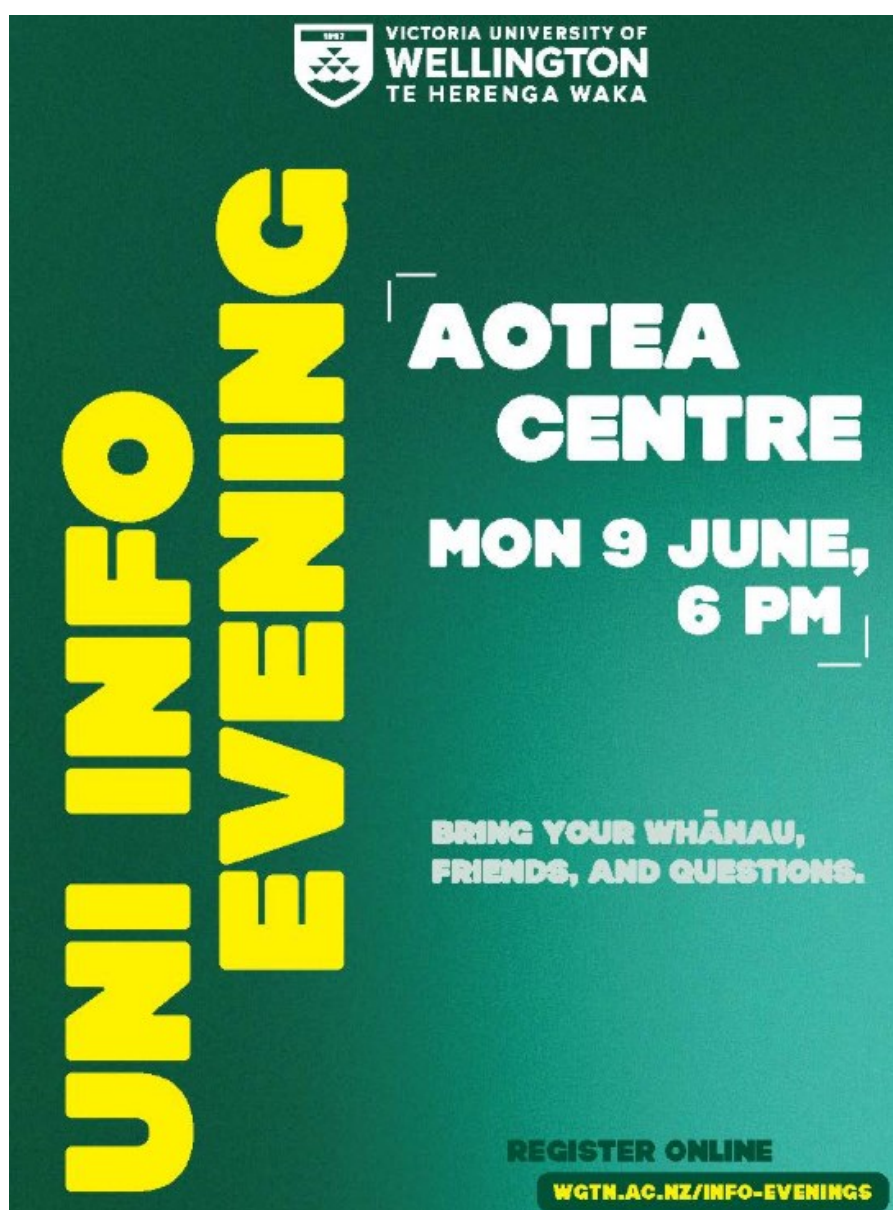
You'll find out about study options, scholarships, accommodation, and living in Wellington, as well as what to expect in your first year of study. Bring your whānau, friends, and questions. Our team are there to make sure you get all the answers you need. Register your interest with Ms Graveson.

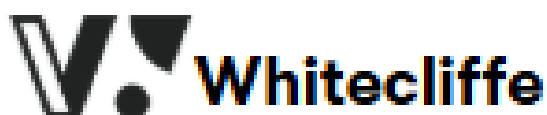
Monday, 9 June, 6pm-8pm. Aotea Centre, 50 Mayoral Drive, Auckland Central.

Join us for our information session introducing you to life and study at Te Herenga Waka—Victoria University of Wellington.

The evening will include information about the student experience at Victoria University of Wellington and your capital city as a study destination. Plus study areas, degree structure, and admission and enrolment, accommodation, scholarships and student services.

VICTORIA UNIVERSITY

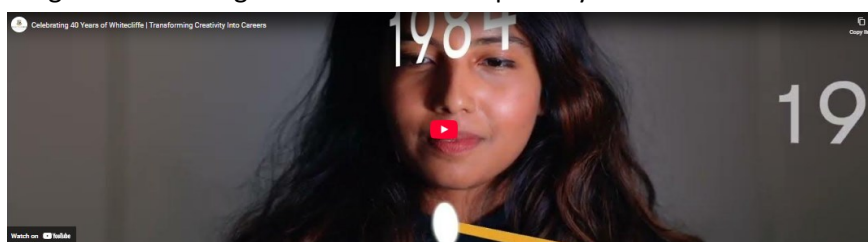




WHITECLIFFE AUCKLAND OPEN DAY

Saturday, 30 August 2025, 9am—6pm. Auckland Campus.

If you're a future student ready to begin an exciting creative journey, this is the perfect place to start. Whitecliffe Open Day offers you the chance to explore our campuses, connect with our dedicated staff and friendly students, and most importantly, get a glimpse into your potential future at Whitecliffe College. You must register online for this open day.



Celebrating 40 Years of Whitecliffe—Transforming Creativity Into Careers.

<https://youtu.be/rfeLCZM9bPI>



ELAM TOURS FOR BACHELOR OF FINE ARTS

Tuesday, 10 June, online evening session

Visit the art studios, the wood, metal, print, and ceramic workshops, and the student gallery.

Your students can meet academic staff and learn more about the Bachelor of Fine Arts.

See Ms G or Ms Kingston for more information.

360 tour—Elam students share their favourite spaces on campus—University of Auckland

<https://youtu.be/Xxywhv33wYE?feature=shared>



Waipapa
Taumata Rau
University
of Auckland



CAREERS & FUTURE PATHWAYS — with Carolyn & Jade



UNIVERSITY OF AUCKLAND SCIENCE YOUTUBE CHANNEL INFORMATION

This is the first of 4 lectures in the series with the theme 'Above and beyond cloud computing'

<https://www.youtube.com/watch?>

AUCKLAND UNIVERSITY OF TECHNOLOGY

OPEN DAY: Saturday 30 August, 9am—3pm. AUT City Campus

THE AI REVOLUTION CAREERS FORUM AT AUT: Monday 12 May, 3.30pm, AUT City Campus. Register your interest with Ms Graveson by 6 May.

Students will hear about career journeys, industry connections and hear from experts in the fields of coding, data science, AI engineering and machine learning who work across science, technology, engineering, arts and maths and use transferable skills to make a difference in the world today. In conjunction with Science Gallery Melbourne.



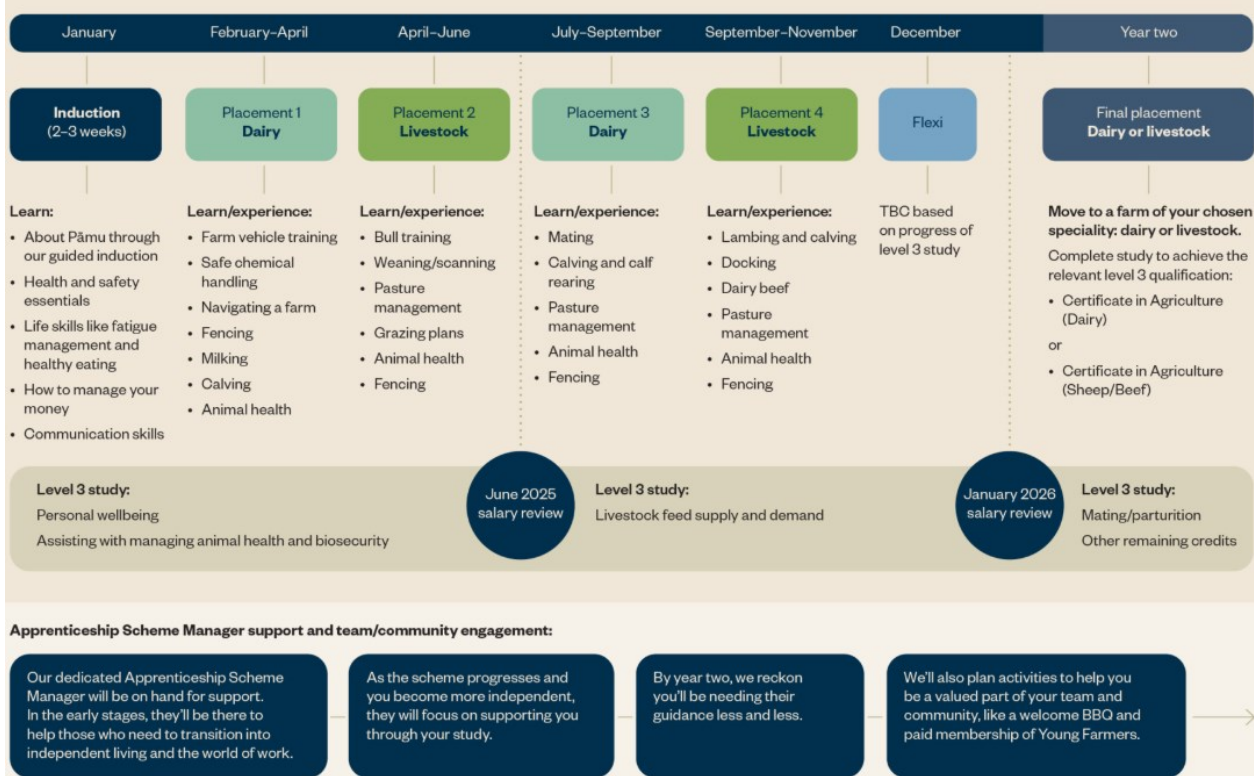
PAMU FARMS OF NEW ZEALAND APPRENTICESHIP SCHEME

<https://www.pamunewzealand.com/careers/apprenticeshipscheme#the-course>

Attention Year 13 Future Farmers: Would you like to experience both dairy and livestock farming? Contact Ms Graveson if you are interested in an Apprenticeship Scheme with PAMU Farms.



Pāmu Apprenticeship Scheme programme – years one and two



DEFENSIVE DRIVING DATES FOR GROUP 1

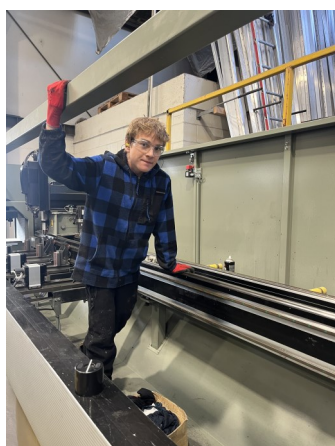
Monday 9 June: 3.15pm - 5.15pm (Session 1)

Monday 16 June - 3.15pm - 5.15pm (Session 2)

Monday 23 June - 3.15pm - 5.15pm then 5.30pm - 7.30pm (Double session 3 and 4 together)

Deposits should have been paid last week, we are following up on any outstanding deposits.

NOTICEBOARD



SPOTLIGHT ON GATEWAY

Matthew Olsen and Alitech

Matthew Olsen is a Year 11 student with a goal to obtain an apprenticeship in the building industry next year. In March this year, Matthew started his Gateway Placement with Alitech Window Systems in Waihi.

Alitech is a family business which manufactures aluminium windows and doors for mostly Waikato and Bay of Plenty-based customers. Alitech is well-known locally for both its product and for involvement in the local community, with numerous children of the family and staff having attended Waihi College.

Matthew attends his placement at Alitech once a week, learning various aspects of aluminium joinery manufacture including how to fit locks and assemble frames, and helping to keep the workspace tidy, healthy and safe. Matthew is a fast learner and an eager worker, and has quickly become a contributing part of the team at the Victoria Street factory. The Gateway programme is providing a great springboard for Matthew's apprenticeship goals and a great opportunity for Alitech and its workers to support a local student.

Preparing for your learner licence test

Thinking about getting your learner licence? Here are some tips and information for preparing.

To get a learner licence, you must:

be at least 16 years old

be able to correctly answer 32 out of 35 questions on the road code

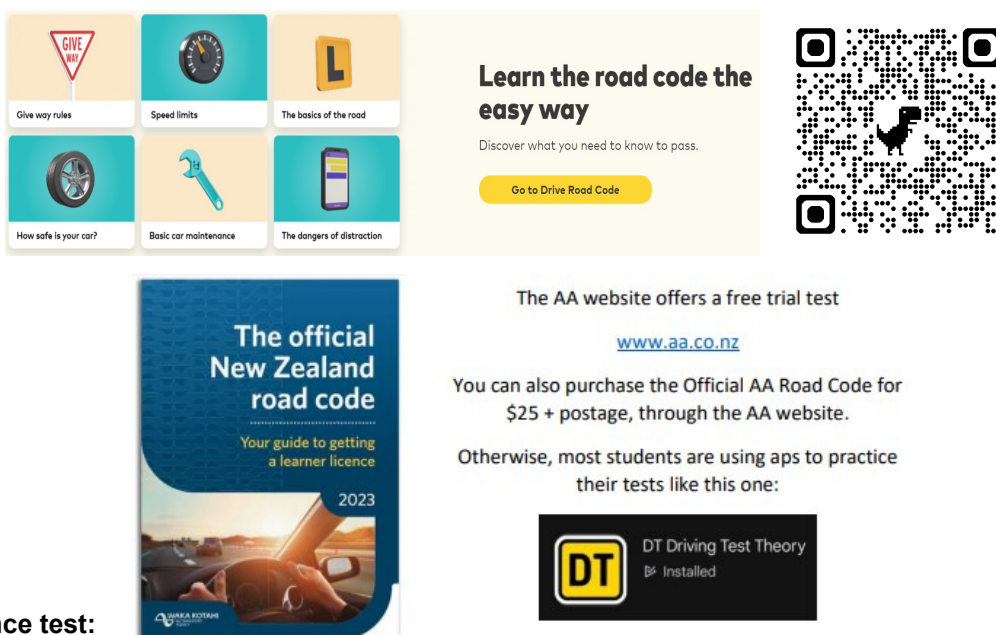
- One of the ways to prepare for the learner licence test is by working your way through Drive's Road Code.

<https://drive.govt.nz/learner-licence> or use the QR below.

- Drive's Road Code contains chapter tests at the end of each section. These are like mini practice tests and a great way to check you're on the right track.

- Complete all the chapter tests and you get access to their official practice test. If you're consistently getting every answer correct in the practice test, that's a good sign you're ready for the real thing.

- Otherwise the Road Code or an app are popular with students, details below.

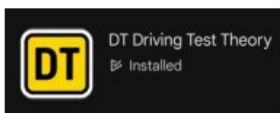


Learn the road code the easy way
Discover what you need to know to pass.
[Go to Drive Road Code](#)

The AA website offers a free trial test
www.aa.co.nz

You can also purchase the Official AA Road Code for \$25 + postage, through the AA website.

Otherwise, most students are using apps to practice their tests like this one:



Learners Licence test:

Each Road Code Practice Test has 35 questions - for a car license you must get 32 out of 35 to pass. Each practice test of 35 questions is randomly generated from all the test questions found in the official NZ Road Code.

Some of our school programs and workshops are able to fully fund Learners License applications, but if you go privately to do your test expect these fees: As of 8 July fees have changed. Your second attempt is covered in the application fee if needed, but attempts after these will each have a fee.

Car (class 1)	Application fee (includes 2 tests)	Test fee for each test from 3rd attempt
Learner	\$96.10	\$54.60

The key for success, is to practice, practice, practice. Good luck.