

CAREERS & FUTURE PATHWAYS — with Carolyn & Jade



ETCO ELECTRICAL PRE TRADE OPEN NIGHT

At this event, you will have the opportunity to:

- Discover the structure and entry requirements of our Level 3 Electrical Pre-Trade Foundation Programme
- Understand pathways from pre-trade courses to apprenticeships and careers in the electrical industry

Discuss support available for students, including Fees Free options and Studylink loans

Our pre-trade programme is designed to give students foundational skills and knowledge in electrical theory, safe working practices, and industry standards, providing an excellent pathway into apprenticeships and em-

NOTICEBOARD



etco.co.nz

**You're
invited to
attend**

EVENT NAME Electrical Pre-trade open night

EVENT DETAILS Bring your family and find out what it is all about

LOCATION Hamilton Training Centre, 28 The Boulevard, Te Rapa

DATE & TIME 7pm - 22nd May **Rsvp** bryan.wrigg@scgnz.org

ADDITIONAL INFORMATION Come and see our campus and get an insight into where a career in the electrical industry can take you. We'd love to see you!



LINCOLN UNIVERSITY



LINCOLN UNIVERSITY Information Evenings 2025

Hawkes Bay	28 May	5.30 - 7.30pm
Nelson	28 May	5.30 - 7.30pm
Waikato	5 June	5.30 - 7.30pm
Christchurch	10 June	5.00 - 7.30pm
Southland	16 June	5.30 - 7.30pm
Dunedin	17 June	5.30 - 7.30pm

MAORI & PASIFIKA EVENT



Join us for this Māori & Pasifika Event to learn about the journey towards growing your future, with Lincoln.

What to expect:

- Explore Scholarships & Study Options
- Chat Accommodation & Support Services
- Ask Questions
- Share Kai
- Interactive Activities
- WIN Prizes

Wednesday, 4th June 2025

Waikato Innovation Park, Hamilton

10.00 am - 1.00 pm

CAREERS & FUTURE PATHWAYS — with Carolyn & Jade



VICTORIA UNIVERSITY OF WELLINGTON INFORMATION EVENINGS

Wednesday, 28 May, 6pm-7pm. Mercury Baypark, Mt Maunganui.

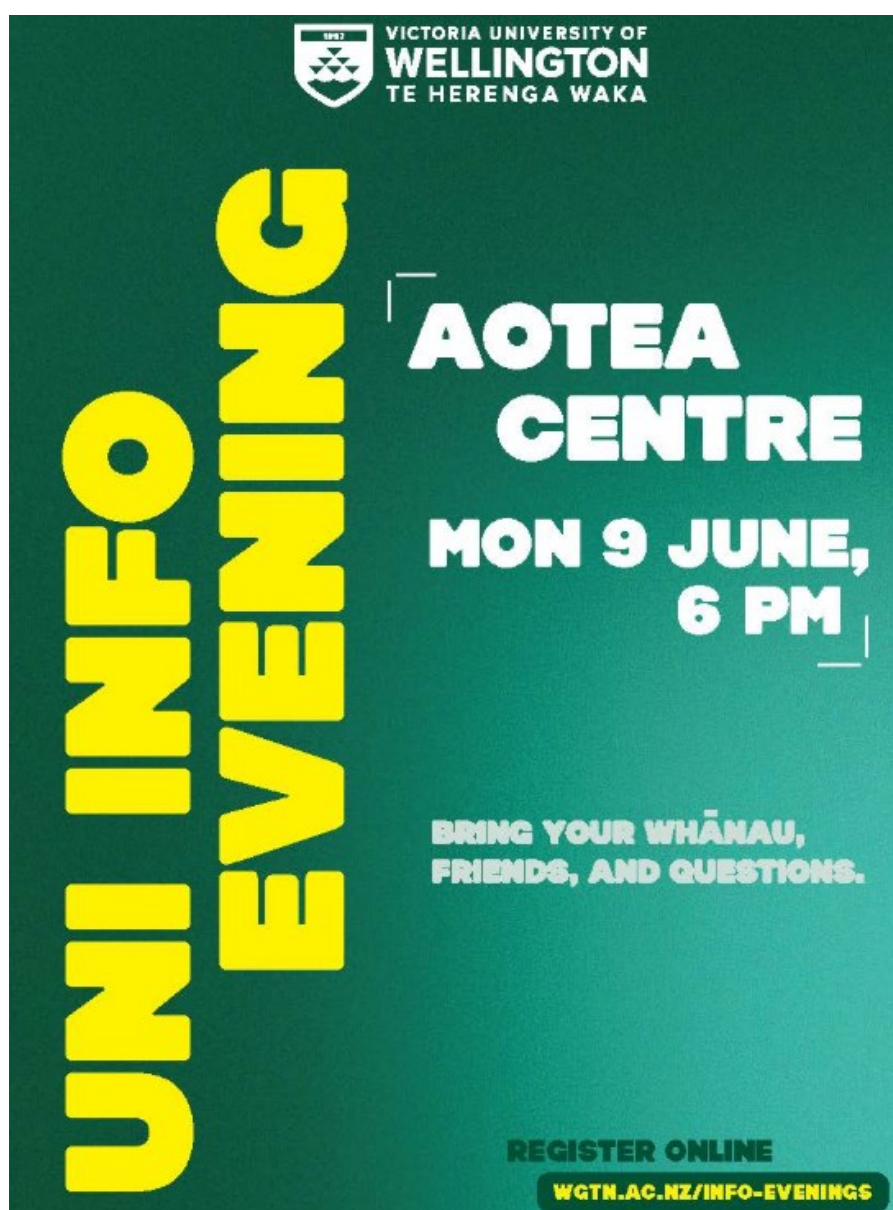
You'll find out about study options, scholarships, accommodation, and living in Wellington, as well as what to expect in your first year of study. Bring your whānau, friends, and questions. Our team are there to make sure you get all the answers you need. Register your interest with Ms Graveson.

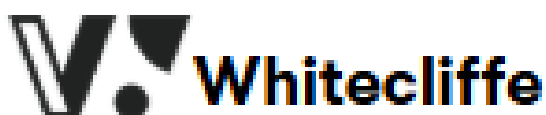
Monday, 9 June, 6pm-8pm. Aotea Centre, 50 Mayoral Drive, Auckland Central.

Join us for our information session introducing you to life and study at Te Herenga Waka—Victoria University of Wellington.

The evening will include information about the student experience at Victoria University of Wellington and your capital city as a study destination. Plus study areas, degree structure, and admission and enrolment, accommodation, scholarships and student services.

VICTORIA UNIVERSITY





WHITECLIFFE AUCKLAND OPEN DAY

Saturday, 30 August 2025, 9am—6pm. Auckland Campus.

If you're a future student ready to begin an exciting creative journey, this is the perfect place to start. Whitecliffe Open Day offers you the chance to explore our campuses, connect with our dedicated staff and friendly students, and most importantly, get a glimpse into your potential future at Whitecliffe College. You must register online for this open day.



Celebrating 40 Years of Whitecliffe—Transforming Creativity Into Careers.

<https://youtu.be/rfeLCZM9bPI>



ELAM TOURS FOR BACHELOR OF FINE ARTS

Tuesday, 10 June, online evening session

Visit the art studios, the wood, metal, print, and ceramic workshops, and the student gallery.

Your students can meet academic staff and learn more about the Bachelor of Fine Arts.

See Ms G or Ms Kingston for more information.

360 tour—Elam students share their favourite spaces on campus—University of Auckland

<https://youtu.be/Xxywhv33wYE?feature=shared>



Waipapa
Taumata Rau
**University
of Auckland**



CAREERS & FUTURE PATHWAYS — with Carolyn & Jade



UNIVERSITY OF AUCKLAND SCIENCE YOUTUBE CHANNEL INFORMATION

This is the first of 4 lectures in the series with the theme 'Above and beyond cloud computing'

<https://www.youtube.com/watch?>

AUCKLAND UNIVERSITY OF TECHNOLOGY

OPEN DAY: Saturday 30 August, 9am—3pm. AUT City Campus

THE AI REVOLUTION CAREERS FORUM AT AUT: Monday 12 May, 3.30pm, AUT City Campus. Register your interest with Ms Graveson by 6 May.

Students will hear about career journeys, industry connections and hear from experts in the fields of coding, data science, AI engineering and machine learning who work across science, technology, engineering, arts and maths and use transferable skills to make a difference in the world today. In conjunction with Science Gallery Melbourne.



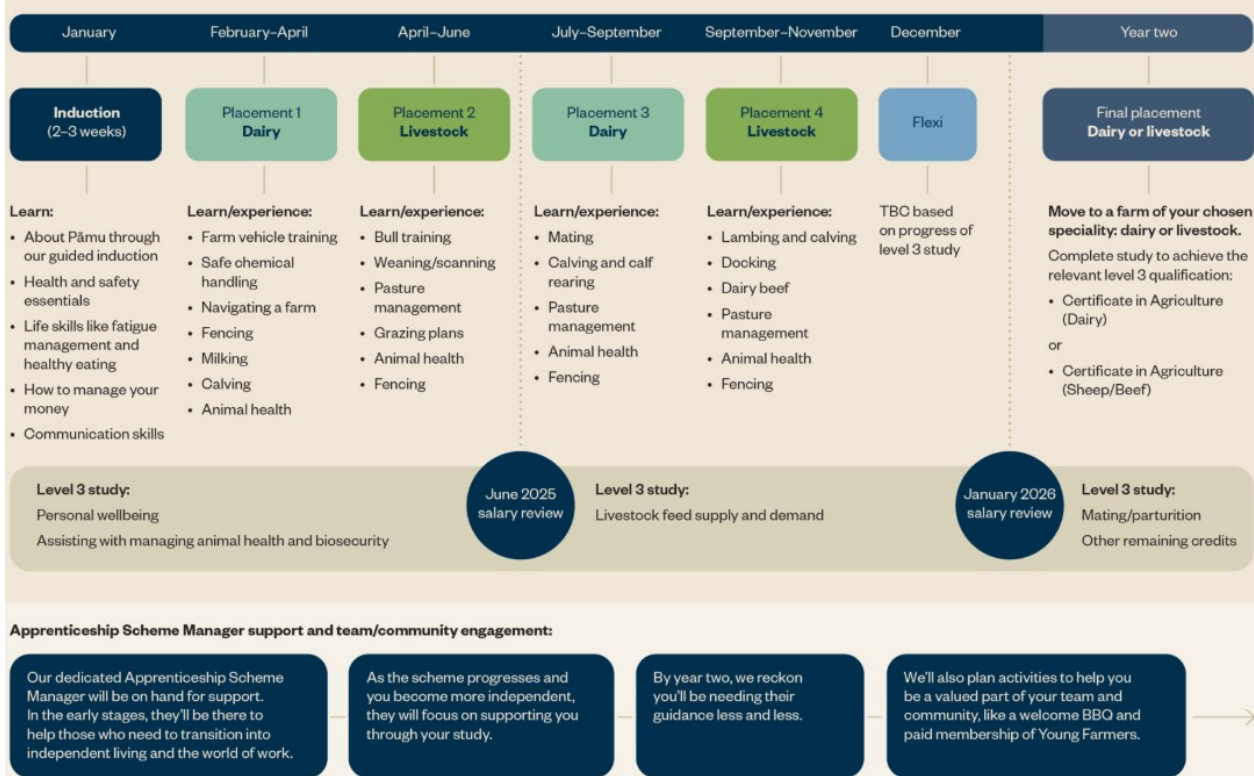
PAMU FARMS OF NEW ZEALAND APPRENTICESHIP SCHEME

<https://www.pamunewzealand.com/careers/apprenticeshipscheme#the-course>

Attention Year 13 Future Farmers: Would you like to experience both dairy and livestock farming? Contact Ms Graveson if you are interested in an Apprenticeship Scheme with PAMU Farms.



Pāmu Apprenticeship Scheme programme – years one and two



Preparing for your learner licence test

Thinking about getting your learner licence? Here are some tips and information for preparing.

To get a learner licence, you must:

- be at least 16 years old

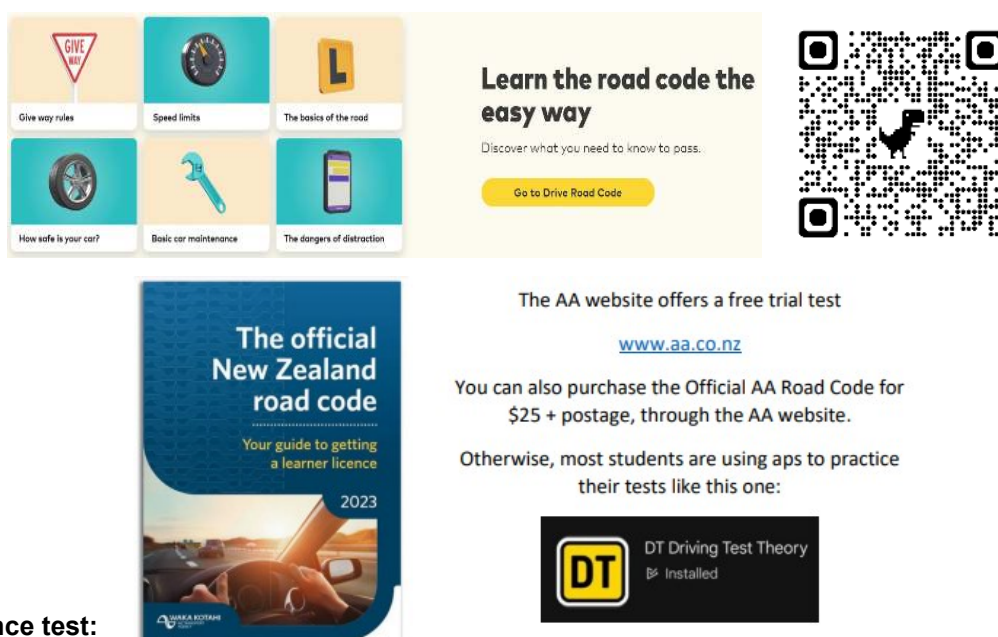
- be able to correctly answer 32 out of 35 questions on the road code

- One of the ways to prepare for the learner licence test is by working your way through Drive's Road Code. <https://drive.govt.nz/learner-licence> or use the QR below.

- Drives Road Code contains chapter tests at the end of each section. These are like mini practice tests and a great way to check you're on the right track.

- Complete all the chapter tests and you get access to their official practice test. If you're consistently getting every answer correct in the practice test, that's a good sign you're ready for the real thing.

- Otherwise the Road Code or an app are popular with students, details below.



Learners Licence test:

Each Road Code Practice Test has 35 questions - for a car license you must get 32 out of 35 to pass. Each practice test of 35 questions is randomly generated from all the test questions found in the official NZ Road Code.

Some of our school programs and workshops are able to fully fund Learners License applications, but if you go privately to do your test expect these fees: As of 8 July fees have changed. Your second attempt is covered in the application fee if needed, but attempts after these will each have a fee.

Car (class 1)	Application fee (includes 2 tests)	Test fee for each test from 3rd attempt
Learner	\$96.10	\$54.60

The key for success, is to practice, practice, practice. Good luck.