

# CAREERS & FUTURE PATHWAYS — with Carolyn & Jade



This newsletter is packed full of University information and open day/ info session dates.



With school-leaver decision making and career expos now about to start, we're delighted to let you know Universities New Zealand—Te Pōkai Tara's

2026 *Thinking about university?* resources are now live at [www.thinkingaboutuni.nz](http://www.thinkingaboutuni.nz)

## PREPARING FOR LIFE AFTER SCHOOL

An informative newsletter that students will find plenty of interesting information in this magazine that will help them as they prepare for life after school, whether they go on to further study

[www.oliverlee.co.nz/leavingschool-issue32](http://www.oliverlee.co.nz/leavingschool-issue32)

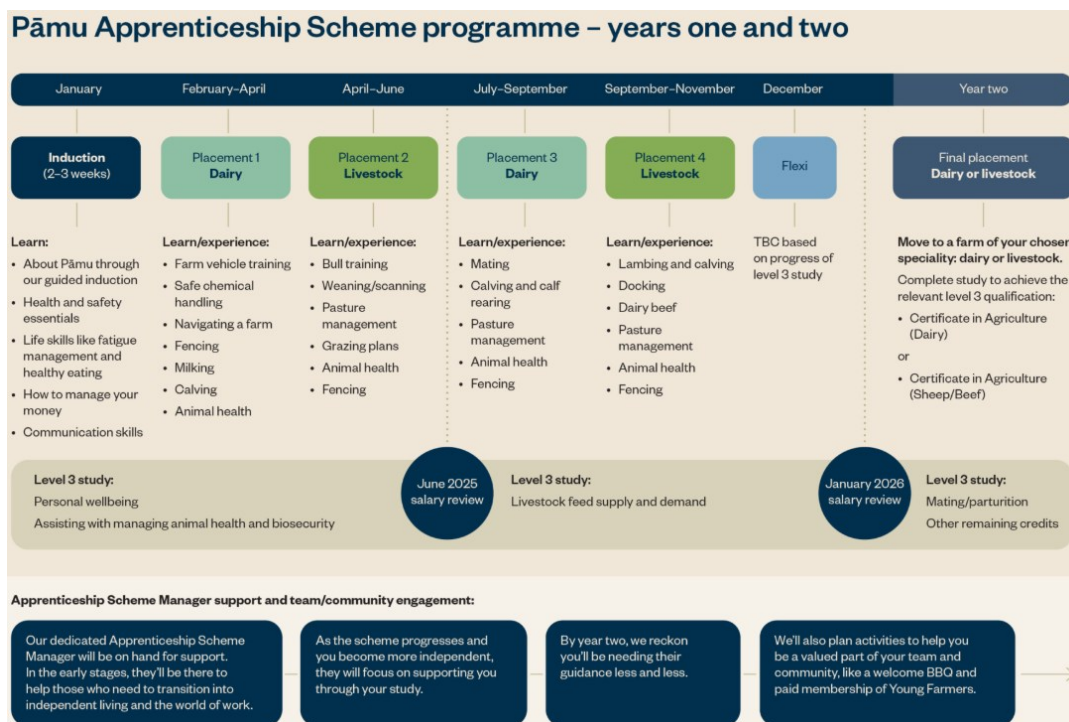


## PAMU FARMS OF NEW ZEALAND APPRENTICESHIP SCHEME

<https://www.pamunewzealand.com/careers/apprenticeshipscheme#the-course>

**Attention Year 13 Future Farmers:** Would you like to experience both dairy and livestock farming?

Contact Ms Graveson if you are interested in an Apprenticeship Scheme with PAMU Farms.



**THIS NEWSLETTER IS SENT TO YOU VIA EMAIL AND CAN ALSO BE FOUND ON OUR WEBSITE**

## CAREERS & FUTURE PATHWAYS — with Carolyn & Jade



Register now for

### OPEN DAY!

Experience our vibrant campus in the heart of Auckland and get a feel for what Waipapa Taumata Rau is all about by attending **Open Day on Saturday 30 August**.



2024 Open Day Highlights  
<https://youtu.be/MkQToKsUts?feature=shared>



Can't make it to Auckland Open Day?

Register for an alternate information session:

**Tauranga—Tuesday, 22 July 2025**

**Hamilton—Tuesday, 29 July 2025**

### UNIVERSITY OF AUCKLAND SCHOLARSHIP INFORMATION

If you are in your final year of school and planning to enrol at Waipapa Taumata Rau, University of Auckland in 2026, you may be eligible for a scholarship - regardless of your background or where you live. Applications are open from Wednesday 21 May to Wednesday 13 August 2025.



### AUCKLAND UNIVERSITY OF TECHNOLOGY

**OPEN DAY: Saturday 30 August, 9am—3pm. AUT City Campus**

**THE AI REVOLUTION CAREERS FORUM AT AUT: Monday 12 May, 3.30pm, AUT City Campus.** Register your interest with Ms Graveson

Students will hear about career journeys, industry connections and hear from experts in the fields of coding, data science, AI engineering and machine learning who work across science, technology, engineering, arts and maths and use transferable skills to make a difference in the world today. In conjunction with Science Gallery Melbourne.





## CAREERS & FUTURE PATHWAYS — with Carolyn & Jade



<https://www.canterbury.ac.nz/>

### INFORMATION SESSIONS

Tauranga, Tuesday, 17 June, 6.00-8.15pm Mercury Baypark Stadium

Hamilton, Wednesday, 18 June, 6.00-8.15pm FMG Stadium

To Register:



Tauranga



Hamilton

### SCHOLARSHIP APPLICATION INFORMATION

For everything you need to know about  
scholarships use these links:

<https://app.showcaseworkshop.com/share/f2mbt1>  
via Laptop

<https://app.showcaseworkshop.com/share/4l2cpn>  
via Phone

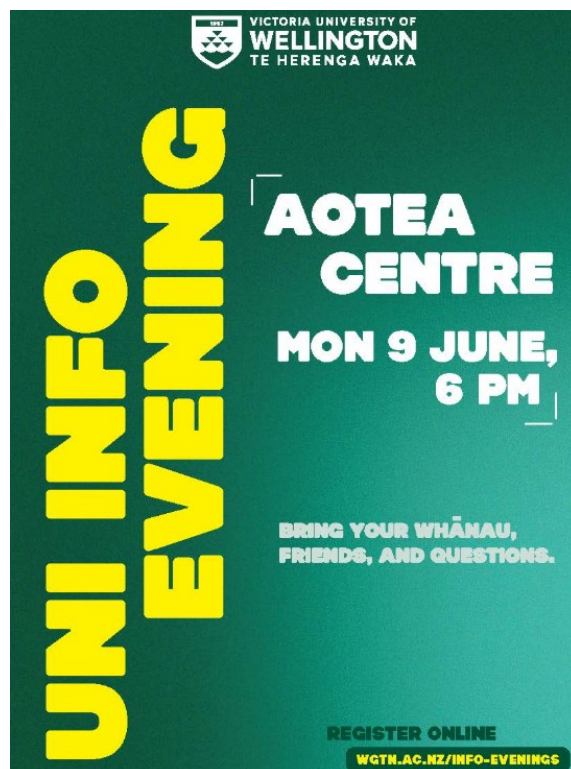


### INFORMATION EVENING

Monday, 9 June, 6pm-8pm. Aotea Centre,  
50 Mayoral Drive, Auckland Central.

Join us for our information session introducing you  
to life and study at Te Herenga Waka—Victoria Uni-  
versity of Wellington.

The evening will include information about the stu-  
dent experience at Victoria University of Wellington  
and your capital city as a study destination. Plus  
study areas, degree structure, and admission and  
enrolment, accommodation, scholarships and stu-  
dent services.



CANTERBURY & VICTORIA

# CAREERS & FUTURE PATHWAYS

## — with Carolyn & Jade



### INFORMATION SESSION

**Waikato Innovation Park—Thursday, 5 June 5:30-7:30pm**

Lincoln University be hosting a series of Information evenings across New Zealand over the coming months. We're thrilled to meet your students and their whānau in person to discuss what Lincoln University could offer them.

We'll be running sessions on different topics all potential Lincoln students could benefit from, such as scholarships and accommodation. They'll also have the chance to talk about study options and what programmes could be right for them. You must be registered for this event.



[https://lincolnuniversity.microsoftcrmporals.comeventsessionsid=Waikato\\_Information\\_Evening\\_20254110364341](https://lincolnuniversity.microsoftcrmporals.comeventsessionsid=Waikato_Information_Evening_20254110364341)

### **SCHOLARSHIP APPLICATIONS OPENING 30 MAY 2025**

Lincoln has a wide variety of scholarships available for your students. These vary from financial support to fully inclusive support and training programmes. Any questions about scholarships can be directed to your school liaison officer, or to our Scholarships Office on [scholarships@lincoln.ac.nz](mailto:scholarships@lincoln.ac.nz)

*Here's just some of the options available:*

Future Leader Scholarship  
Sports Scholarships  
Tihi Kahumaki Scholarship  
Pasifika Excellence Scholarship  
Lincoln University Vice-Chancellor's Scholarships for Excellence  
All Māori and Pasifika Scholarships

### **MAORI & PASIFIKA EVENT**



Join us for this Māori & Pasifika Event to learn about the journey towards growing your future, with Lincoln.

#### **What to expect:**

- Explore Scholarships & Study Options
- Chat Accommodation & Support Services
- Ask Questions
- Share Kai
- Interactive Activities
- WIN Prizes

**Wednesday, 4<sup>th</sup> June 2025**

**Waikato Innovation Park, Hamilton**

**10.00 am - 1.00 pm**

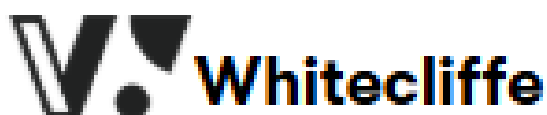
**Take a Virtual Tour**

<https://lincoln.youtour.nz/>



LINCOLN UNIVERSITY





### WHITECLIFFE AUCKLAND OPEN DAY

**Saturday, 30 August 2025, 9am—6pm. Auckland Campus.**

If you're a future student ready to begin an exciting creative journey, this is the perfect place to start. Whitecliffe Open Day offers you the chance to explore our campuses, connect with our dedicated staff and friendly students, and most importantly, get a glimpse into your potential future at Whitecliffe College. You must register online for this open day.



Celebrating 40 Years of Whitecliffe—Transforming Creativity Into Careers.

<https://youtu.be/rfeLCZM9bPI>



### ELAM TOURS FOR BACHELOR OF FINE ARTS

**Tuesday, 10 June, online evening session**

Visit the art studios, the wood, metal, print, and ceramic workshops, and the student gallery.

Your students can meet academic staff and learn more about the Bachelor of Fine Arts.

See Ms G or Ms Kingston for more information.

360 tour—Elam students share their favourite spaces on campus—University of Auckland

<https://youtu.be/Xxywhv33wYE?feature=shared>



Waipapa  
Taumata Rau  
**University  
of Auckland**



# Preparing for your learner licence test

Thinking about getting your learner licence? Here are some tips and information for preparing.

To get a learner licence, you must:

be at least 16 years old

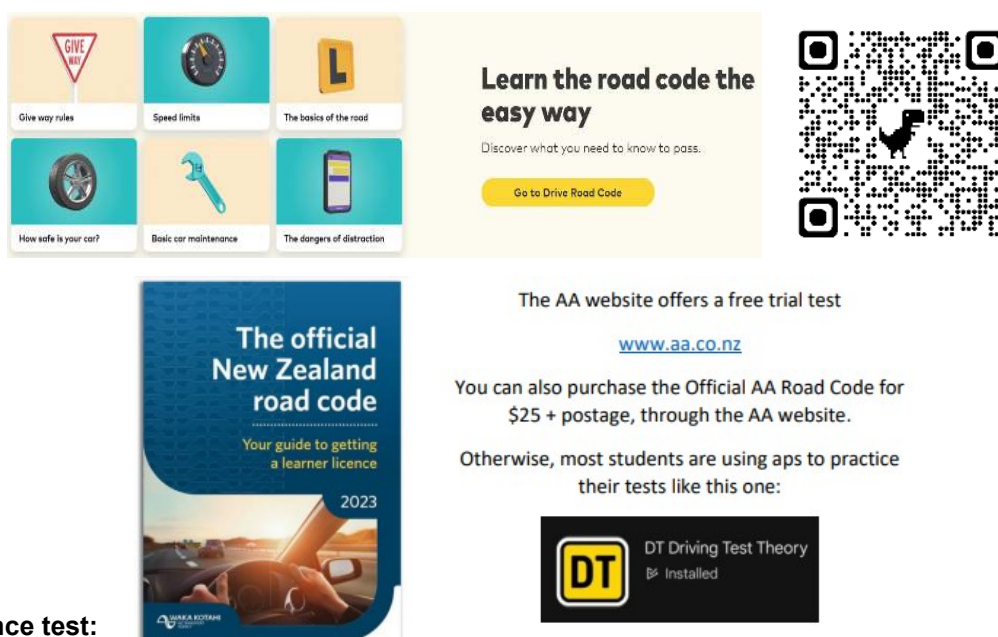
be able to correctly answer 32 out of 35 questions on the road code

- One of the ways to prepare for the learner licence test is by working your way through Drive's Road Code. <https://drive.govt.nz/learner-licence> or use the QR below.

- Drive's Road Code contains chapter tests at the end of each section. These are like mini practice tests and a great way to check you're on the right track.

- Complete all the chapter tests and you get access to their official practice test. If you're consistently getting every answer correct in the practice test, that's a good sign you're ready for the real thing.

- Otherwise the Road Code or an app are popular with students, details below.



## Learners Licence test:

Each Road Code Practice Test has 35 questions - for a car license you must get 32 out of 35 to pass. Each practice test of 35 questions is randomly generated from all the test questions found in the official NZ Road Code.

Some of our school programs and workshops are able to fully fund Learners License applications, but if you go privately to do your test expect these fees: As of 8 July fees have changed. Your second attempt is covered in the application fee if needed, but attempts after these will each have a fee.

Car (class 1)	Application fee (includes 2 tests)	Test fee for each test from 3rd attempt
Learner	\$96.10	\$54.60

**The key for success, is to practice, practice, practice. Good luck.**