

WAIHĪ COLLEGE NEWSLETTER

ISSUE 11 | 2025

PRINCIPAL'S COMMENT

Kia ora Whanau

As the days grow shorter and the crisp air of deep Autumn settles in around us here in Waihi, I wanted to take a moment to connect with you all and reflect on some of the wonderful things happening within our Waihi College community.



This week, the concept of **kaitiakitanga** has been on my mind. It speaks to the profound responsibility we have to care for and protect not only our environment but also the precious stories and heritage that weave together the vibrant tapestry of Waihi College. Each one of our whānau brings a unique thread to this tapestry, rich with history, traditions, and experiences that enriches us all. By valuing and sharing these stories, we strengthen our understanding of one another and deepen our connection to this place we call our school.

On the sporting front, we are thrilled to announce the launch of our winter codes! The energy and enthusiasm surrounding these teams are fantastic, and we are looking forward to seeing our students embrace the challenges and triumphs that come with competition. While we certainly hope for some great results on the field and court, our focus remains firmly on the incredible team effort, camaraderie, and boost to school spirit that participation in sport brings. Win or lose, the lessons learned and the bonds forged are invaluable.

Looking ahead, anticipation is building for our school production in June – **Mamma Mia!** It is truly inspiring to witness the sheer dedication and talent of both our students and staff who are working tirelessly behind the scenes. From set design and costumes to rehearsals and choreography, the level of commitment is astounding. We can't wait for the curtain to rise and for you all to experience the joy and energy of this fantastic musical.

Finally, I hope you have had the opportunity this week to explore our new School TV app, which can be easily found on our website. It recently featured an important article addressing the issue of vaping and how we can collectively support our young people as whānau through this health concern. We believe open communication and shared understanding are key, and we encourage you to engage with this resource.

As always, thank you for your ongoing support of Waihi College. Together, we continue to nurture a learning environment where our students can grow, connect, and thrive.

Nga manaakitanga,

Briar

SCHOOL WIDE

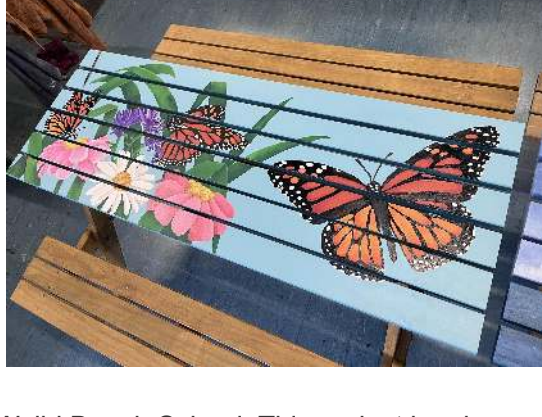


TAIWAN FUNDRAISER

We are looking forward to sending twenty of our students overseas later in the year to showcase and spread Waihi College manaakitanga to our sister schools in Taiwan and to help our rangatahi experience the world, inspiring their future pathways.

If you think you can help, please get in touch.

PICNIC TABLES TO WAIHI BEACH SCHOOL

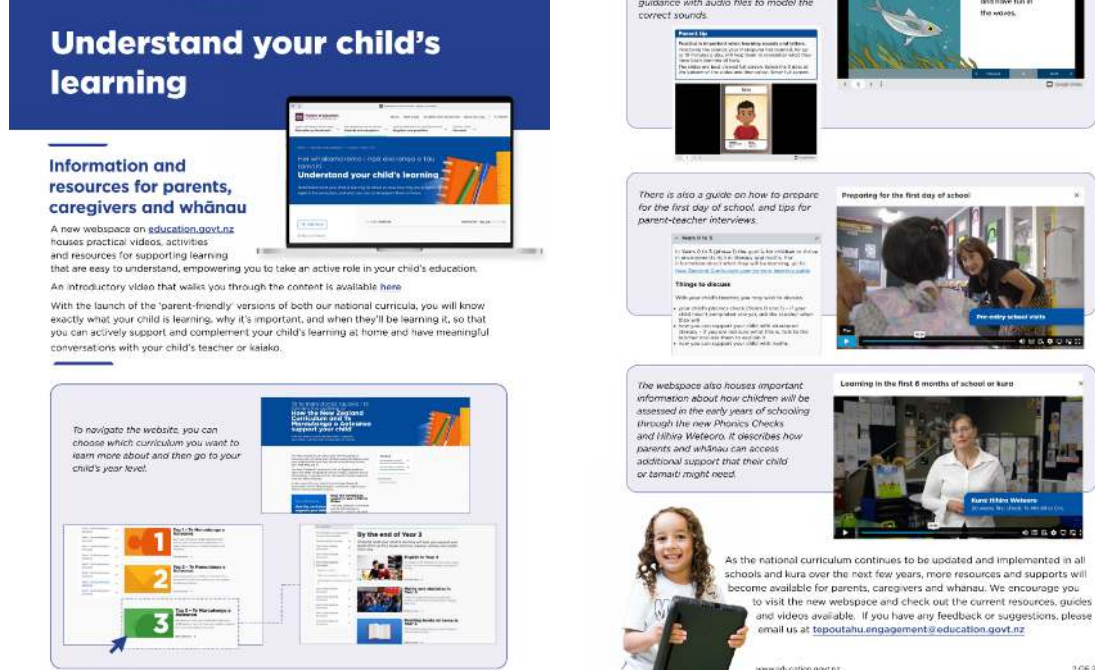


We have two new picnic tables heading off to Waihi Beach School. This project has been a collaboration between Technology and Visual Arts. The tables were built by construction students and then painted by various painting students over the last year! A real team effort! Keep an eye out for them in their new home at Waihi Beach School!

MOE PARENT PORTAL

The Ministry of Education have launched a new Parent Portal – an online resource designed to support families to play their part in their child's learning.

Education is a partnership of what happens in the classroom and what happens at home. Parents, caregivers, and whānau play an important role in supporting their child's learning and development. The new webspace is designed to make it easier for parents, caregivers, and whānau to access clear and up-to-date information on the school curriculum, assessment practices, and ways they can complement their child's learning.



COMING UP

WAIHI COLLEGE BALL

The Ball is nearly here and it's going to be an amazing night!!!

All forms are now in - but chat to Wendy or Ms Howell if you didn't get yours in on time or have any questions. Tickets are on sale now from the front office and are collected at the time of payment (or shortly thereafter if Sue is too busy to hand out immediately).

Remember if you are bringing a partner from outside of Waihi College (even ex students), they must arrive with you and are your responsibility while at the Ball. Any questions around this, please chat to Wendy or Ms Howell. The Ball starts at 7pm at the Waihi Beach Surf Club, with the doors opening at 6.40pm and closing at 7.40pm. The Ball finishes at 10.30pm and guests can leave as early as 10pm if they wish but need permission from caregivers to leave any earlier. Getting home is the responsibility of yourselves and your caregivers.

Remember, this is a school event so the usual rules apply around drinking, drugs, smoking and vaping. We will have security guards as usual to keep the event running smoothly who will be checking the premises throughout the night and checking guests upon entry.



COMING THIS TERM!

We are so excited to be putting on Mamma Mia this term! The cast and crew have been working really hard and it's going to be a great show. Evening shows will be on Wednesday 18th, Thursday 19th and Friday 20th and then a matinee on Saturday 21st. Tickets will go on sale soon via Humantix (which we used for Grease too) and a link will be shared on our website, social media and newsletters.

WAIHĪ COLLEGE

MAMMA MIA!



WAIHI COLLEGE LAUNCHES SCHOOL TV

Because parenting doesn't come with instructions, SchoolTV is a wellbeing resource implemented at our school to help support you in the challenges of modern-day parenting relating to youth mental health and wellbeing. Parenting is a learning journey and SchoolTV supports families by providing credible information from trusted sources with practical strategies to help alleviate some of the challenges being faced by young people today.

Watch video interviews with leading wellbeing specialists and browse a library of resources. Each topic is accompanied by factsheets, podcasts, books, articles, apps and other videos.

This award-winning resource helps families build relationships, foster connections, enable understanding and break down barriers to navigate a pathway towards better mental health and wellbeing for young people. It will assist you in starting those conversations on topics that can sometimes be awkward or difficult to tackle.

Parents and caregivers are the greatest influence on a young person's life and SchoolTV focuses on empowering confident parenting.

Explore SchoolTV today at <https://waihicol.nz.schooltv.me>

SchoolTV Empower confidence.



Because parenting doesn't come with instructions

Modern-day parenting can be challenging. Like never before, parents are seeking clear, fact-based solutions. SchoolTV delivers credible and current information from wellbeing experts via a unique digital platform. Browse through the resource library and find practical strategies on a variety of topics that address the challenges of raising happy, resilient, young people in our ever-changing world.

A resource to support modern-day parenting

- A unique digital platform designed to support parents, caregivers and educators
- Watch video interviews with leading ALL NZ and international wellbeing specialists
- Browse the library of resources. Each topic is accompanied by factsheets, podcasts, books, articles, apps and videos
- Access to a series of mental health topics such as cyberbullying, anxiety, screen time, positive parenting and many more
- Discover new topics every month and access an archive of past topics 24/7

Explore SchoolTV today! Now available at your school.



WAIHI COLLEGE HAS A SCHOOL NURSE AVAILABLE MONDAY-WEDNESDAY 8.30AM-4.30PM FOR YEAR 9-13 AVAILABLE FOR YEAR 7-8 IN EMERGENCIES

POP IN TO THE BUILDING NEXT TO THE TREE OF LIFE WALK IN THE APPOINTMENT, OR TEXT/PHONE ON 0272983787

LOOK FORWARD TO SEEING YOU IF YOU HAVE ANY HEALTH NEEDS OR QUESTIONS MARGIE GOLDSWORTHY / SCHOOL NURSE FOR WAIHI COLLEGE



Ngā mihi, with kind regards Margie (She/Her)

Margie Goldsworthy | SCHOOL NURSE WAIHI

M: 0272983787

W: www.pinnacle.co.nz

