

WAIHĪ COLLEGE NEWSLETTER

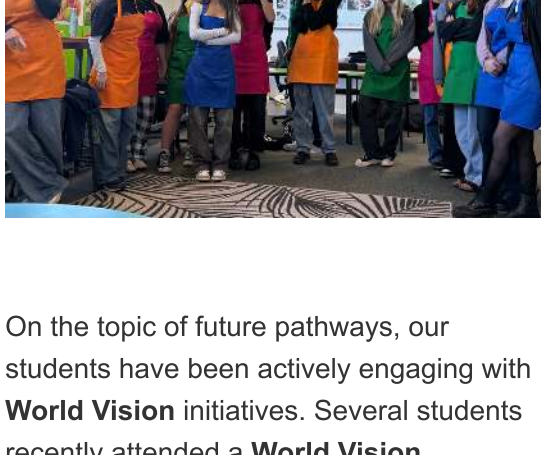
ISSUE 13 | 2025

PRINCIPAL'S COMMENT

Kia ora Whanau

As the term progresses, our kura continues to be a vibrant hub of learning, growth, and opportunity for our students. This week, I want to share some highlights and look ahead to exciting events on the horizon.

Firstly, I recently had the privilege of visiting Parliament to gain a deeper understanding of the education sector at a national level. This provided valuable insights into potential budget implications and strategic directions that could shape the future of education for our rangitahi. I look forward to applying this knowledge to ensure Waihi College continues to provide the best possible learning environment.



On the topic of future pathways, our students have been actively engaging with **World Vision** initiatives. Several students recently attended a **World Vision conference**, which was an inspiring opportunity to connect with like-minded young people and learn about global issues. Furthermore, we've had successful visits from various Universities, for our senior students, offering them a glimpse into tertiary education and helping them envision their future academic journeys. We are committed to providing diverse opportunities that broaden our students' horizons and empower them to become informed and engaged global citizens.

Looking ahead, there are some fantastic trips and opportunities coming up for our students. More details will follow from the relevant departments, but please keep an eye out for information regarding these enriching experiences.

This past weekend, we hosted our Senior ball - it was fantastic to see our young people glitz and glammed up for the night. Huge thanks to Wendy and the Ball committee for making this happen for our young people, and also to the staff who came along to support our students.

I had the very fabulous opportunity to judge our Master Chef competition at PCIT this week - wow, the teamwork and flavour fusions were next level! Congratulations to our young people who were a part of this! What an incredible space for our young people - and very passionately led by the amazing staff here!

This week also provides an opportunity to acknowledge and celebrate our incredible staff. They are the heart of our kura, and I am constantly impressed by the diverse ways they connect with and navigate the individual needs of our students. Their dedication and passion are truly what makes Waihi College such a supportive and nurturing environment. Thank you to each and every one of you.

As a school community, we also want to reinforce the importance of **respecting property**. This is our shared space, and taking care of it ensures a positive environment for everyone. This also means we need to respect our neighbouring properties, please stay off other people's lawns when walking or parking - thank you.

Finally, I want to reiterate a message shared at our assembly this week, a message I truly believe in: **Be the kaitiakitanga of yourself**. Be the guardian of your own well-being, your thoughts, and your choices. Choose your own label, define who you are, and embrace it. Remember, **you are loved, you belong, and you are important**.

As I often say to my own children: you are kind, you are humble, you are important, and you will do great things.

Nga manaakitanga,
Briar

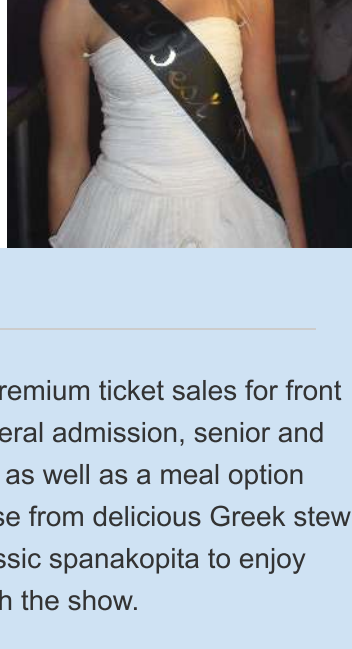
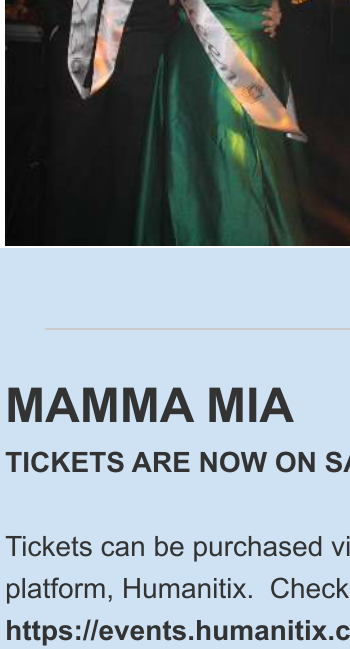
SCHOOL WIDE

WAIHI COLLEGE BALL

Hey everyone!

Last weekend on Saturday night, Waihi College hosted its Masquerade Ball at the Waihi Beach Surf Club. It was an amazing turnout from our senior students and everyone looked beautiful! We voted through a QR code made by our Ball Committee and our winners were announced at the end of the night. Our Beau and Belle were Isabelle and Makai, our Prince and Princess were Max and Ruby and our King and Queen were Tegan and Cameron! It was a really fun night, filled with lots of dancing, good food and very cute photos being taken in the photo booth. We really appreciate everyone that helped us make the night as good as it was, including the Ball Committee, the Surf Club and all the teachers that attended. The Wandering Photos are out on the school website and the formal and photo booth photos will be out soon so keep an eye out for those!

Bayley Goddard - Leader of Arts & Culture 2025.



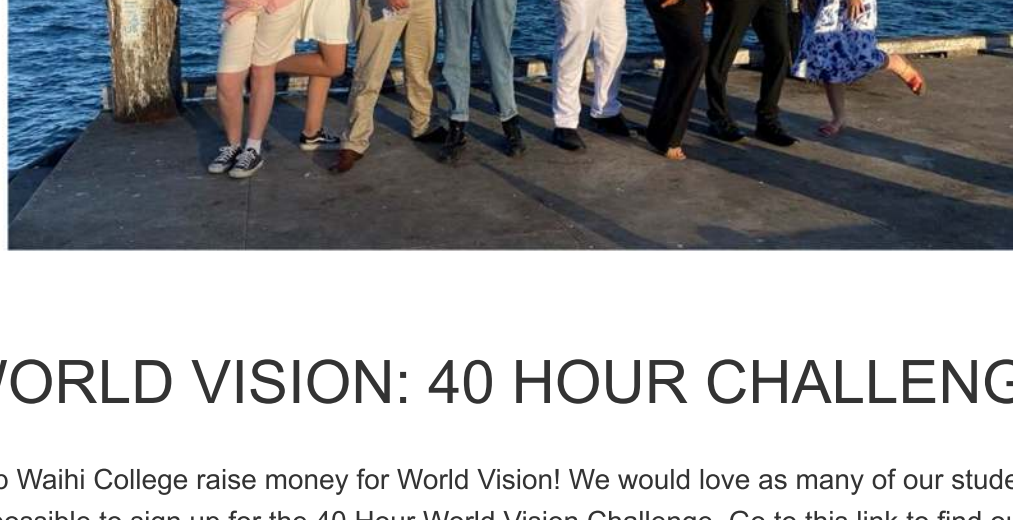
MAMMA MIA

TICKETS ARE NOW ON SALE!

Tickets can be purchased via online platform, Humanitix. Check out <https://events.humanitix.com/mamma-mia-fgu5qqrj> for all the different purchasing options! Be in quick so you don't miss out!!

There will be premium ticket sales for front row seats, general admission, senior and student pricing as well as a meal option add on. Choose from delicious Greek stew (stifado) or classic spanakopita to enjoy while you watch the show.

Evening shows will be on Wednesday 18th, Thursday 19th and Friday 20th June and then a matinee on Saturday 21st June.



WORLD VISION: 40 HOUR CHALLENGE

Help Waihi College raise money for World Vision! We would love as many of our students as possible to sign up for the 40 Hour World Vision Challenge. Go to this link to find out how. <https://fundraise.worldvision.org.nz/join/WaihiCollege> Once you have your page set up, you can share it with friends and family and start raising money. The Challenge is from 13th-15th June and our aim is to raise \$12,500!!!. What could you go without to help someone in need?



Max Morley Represents Waihi College with Distinction at Lifeguard Leadership Camp

Waihi College student and surf lifeguard Max Morley has been named Top Male Candidate at the 2025 Eastern Region Intermediate Lifeguard School, held at Mt Maunganui in early May.

Max was one of eight lifeguards from Waihi Beach Lifeguard Services selected to attend the three-day residential development programme, which brought together 29 young lifeguards from across the region. The camp focused on advanced rescue techniques, leadership training, emergency response, and teamwork – all in physically and mentally demanding conditions.

Known for his dedication both on and off the beach, Max was recognised for his commitment, skill, and personal growth throughout the weekend. The award reflected not only strong surf knowledge and fitness, but also the ability to lead, communicate under pressure, and support others through complex scenarios.

Outside of school and patrol hours, Max is deeply involved in surf sport and club life. With 30 patrol hours and 16 non-patrol service hours under his belt this season alone, he also trains regularly to improve his fitness and rescue capabilities.

Surf Lifesaving is truly a family affair for the Morleys – with both parents, siblings, and extended whānau actively involved at the Waihi Beach club across lifeguarding, surf sport, coaching, and search and rescue.

Waihi Beach Lifeguard Services is proud to celebrate Max's success – a reflection of his dedication, values, and leadership. He's a great example of where service, sport, and learning can come together to grow young people into confident, capable leaders.

If you're curious about what's involved in becoming a surf lifeguard, have a chat with Max at school – or with other Waihi College students like Aidan or Luke Butler who are also active surf lifeguards. You can also get in touch with Waihi Beach Lifeguard Services directly – we'd love to hear from you.

info@waihbeachlifeguards.co.nz or via our socials:
<https://www.facebook.com/WaihiBeachSurfClub>



WAIHI COLLEGE LAUNCHES SCHOOL TV

Because parenting doesn't come with instructions, SchoolTV is a wellbeing resource implemented at our school to help support you in the challenges of modern-day parenting relating to youth mental health and wellbeing. Parenting is a learning journey and SchoolTV supports families by providing credible information from trusted sources with practical strategies to help alleviate some of the challenges being faced by young people today.

Watch video interviews with leading wellbeing specialists and browse a library of resources. Each topic is accompanied by factsheets, podcasts, books, articles, apps and other videos.



This award-winning resource helps families build relationships, foster connections, enable understanding and break down barriers to navigate a pathway towards better mental health and wellbeing for young people. It will assist you in starting those conversations on topics that can sometimes be awkward or difficult to tackle.

Parents and caregivers are the greatest influence on a young person's life and SchoolTV focuses on empowering confident parenting.

Explore SchoolTV today at <https://waihicol.nzschooltv.me>

COMMUNITY NOTICES

Waihi College - International
Connecting Families | Sharing Cultures | Inspiring Learning

HOST FAMILIES NEEDED

Waihi College is Seeking Host Families to Host International Students in 2025/26

You Receive Weekly Payments for Hosting!

INTERESTED?
Contact: Magdalen.02102778120@magdalen@waihicol.school.nz

Russell Player Memorial LIONS FUN RIDE
In support of the Cancer Society's "Lions Lush" Hamilton

Sunday 25th May 2025

Four different rides all finishing at the Railway Reserve Paeroa

- 10am start - Waihi to Paeroa (25km) Start at Goldfields Railway Waihi
- 10am start - Thames Kopu to Paeroa (25km) Start at Pocomakua Kopu
- 10am start - Te Aroha to Paeroa (25km) Start at Old Te Aroha Railway Station
- 11am start - Karangahake to Paeroa (70km) Start at old Karangahake Hall site

Major Spot Prizes

"PRE PAID REGISTRATION"

- 1. PRIMARY SCHOOLS teams of 8 people - ENTRY \$50
- 2. COLLEGE/BUSINESS teams of 6 - ENTRY \$80
- 3. ADULTS \$15 - CHILDREN \$5 - FAMILY \$25 (2 Adults + 2 Children)

Run by the : Combined Lions Clubs of Ngatea, Paeroa, Te Aroha and Waihi

PARENT CORNER

WAIHI COLLEGE HAS A SCHOOL NURSE AVAILABLE
MONDAY-WEDNESDAY 8.30AM-4.30PM FOR YEAR 9-13
AVAILABLE FOR YEAR 7-8 IN EMERGENCIES

POP IN TO THE BUILDING NEXT TO THE TREE OF LIFE
WALK IN APPOINTMENT, OR TEXT/PHONE ON
0272983787

LOOK FORWARD TO SEEING YOU IF YOU HAVE ANY HEALTH NEEDS OR QUESTIONS

MARGIE GOLDSWORTHY / SCHOOL NURSE FOR WAIHI COLLEGE

Ngā mihi, with kind regards
Margie (She/Her)

Margie Goldsworthy | SCHOOL NURSE
WAIHI
M: 0272983787
W: www.pinnacle.co.nz

