

WAIHĪ COLLEGE NEWSLETTER

ISSUE 15 2026

PRINCIPAL'S COMMENT

Tēnā koutou katoa e te whānau o Waihi College. This term our focus has been on **whanaungatanga** – the relationships, connections and sense of belonging that bind us together as a school community. Over recent weeks, we have seen this value come to life in so many ways.

Our sold-out showcase **Unhemmed** was a wonderful example. Audiences saw the performers, costumes, lighting and creativity, but behind the scenes were countless hours of teamwork, commitment, problem-solving and support. Students, staff, whānau and community members came together to create something truly special, and we are incredibly proud of everyone involved.

A special thank you to Paige Kingston and the many staff, volunteers and supporters whose vision and hard work made the event such a success.

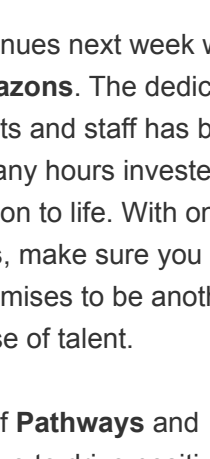
Authentic learning experiences, including EOTC opportunities and student-led projects such as the Hollis Bush initiative, continue to strengthen engagement and real-world learning.

Strong partnerships with whānau, employers and community organisations are enriching learning experiences and supporting student success. Mentoring, collaboration and shared expertise continue to build capability across our school community. Walkthroughs the classrooms often highlight friendly, respectful and engaged students who are proud to share their learning and contribute positively to our school culture.

I would also like to acknowledge our sporting teams who continue to represent Waihi College with pride, whether competing in rain, but in sunshine. I have recently received several emails praising our students' conduct, sportsmanship and positive attitudes. Thank you for living our values and representing our school so well on the courts, fields and arenas.

As always, thank you to our staff, whānau and community for the time, care and support you invest in our young people. Together, we are creating a place where students can belong, thrive and achieve success in many different ways.

Kia kaha, kia maia, kia manawanui,
Briar Principal | Tumukū Waihi College



The excitement continues next week with **Revenge of the Amazons**. The dedication shown by our students and staff has been phenomenal, with many hours invested in bringing this production to life. With only **three performances**, make sure you don't miss out on what promises to be another outstanding showcase of talent.

Our strategic goals of **Pathways and Partnerships** continue to drive positive outcomes for learners. Flexible pathways through programmes such as AE, Te Ara Hou, Gateway, and vocational learning are providing meaningful opportunities for students to succeed.

DID YOU KNOW?

Did you know that Whare Maia was established in 1998 as a unique house of learning, designed to be both a teaching space and a place where te ao Māori could be celebrated and lived every day?

Named in honour of Maia, a much-loved member of our school community, Whare Maia was created through the vision and determination of staff, whānau, students, and local community members. Many of the carvings were crafted by students working alongside local carvers, using macrocarpa timber sourced from trees grown on the school grounds.

For more than 25 years, Whare Maia has provided a place of belonging, connection, and cultural pride. It has supported generations of taurua to strengthen their identity, learn te reo Māori, participate in ikaanga, and build lifelong connections with their culture and community.

Today, Whare Maia continues to be a living taonga of Waihi College—growing, evolving, and enriching the lives of our students while honouring the legacy of those who helped bring it to life.

Calling all Bakers!

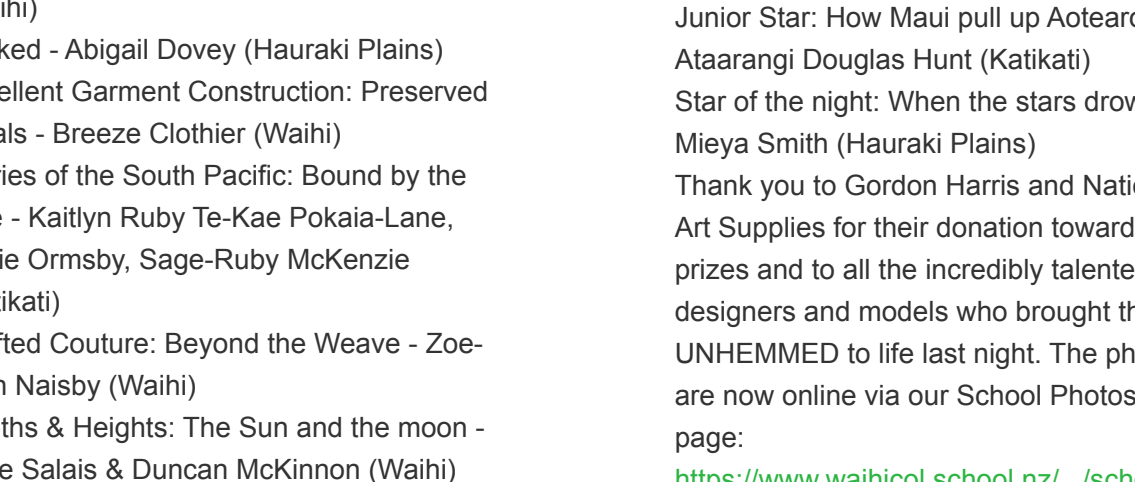
We're putting out the call for homemade goodies to help stock the food stall at our production of *Revenge of the Amazons*!

Rather than buying food to sell, we'd love donations from our amazing kura and wider community. Every muffin, slice, brownie, biscuit, cake, or sweet treat helps raise funds to cover the costs of the play and support our Drama Department.

And because we're a competitive bunch... we're turning it into a baking competition! Each night we'll have a "People's Choice" vote, with audience members able to cast their vote for their favourite baking creation. The winning baker each night will take home a prize!

Baking can be dropped off each day from Wednesday 24th, through to Friday 26th at either the Front Office or the Student Centre, and will be proudly displayed (and hopefully quickly sold!) that evening.

So dust off those recipe books, fire up the oven, and help us make our food stall as spectacular as the show itself. Thank you for supporting our talented cast and crew – we can't wait to see what you bake!



Help stock our food stall with your homemade baking and support our production of *Revenge of the Amazons*!

DONATIONS
Every treat helps cover costs and supports our Drama Department.

BAKING COMPETITION!
Each night, we vote for your favourite bake. The winner takes home a prize!

DROP OFF DATES:
WEDNESDAY, THURSDAY & FRIDAY
(OPENING HOURS 10:00-12:00)

DROP OFF LOCATION:
FRONT OFFICE OR STUDENT CENTRE
(AND SOLD) EACH NIGHT.

BAKING WILL BE DISPLAYED
(AND SOLD) EACH NIGHT.

THANK YOU FOR SUPPORTING
OUR TALENTED CAST & CREW!

Drop off dates: Wednesday, Thursday & Friday (opening hours 10:00-12:00)

Drop off location: Front Office or Student Centre (and sold) each night.

Baking will be displayed (and sold) each night.

Thank you for supporting our talented cast & crew!

Help stock our food stall with your homemade baking and support our production of *Revenge of the Amazons*!

Every treat helps cover costs and supports our Drama Department.

Baking competition! Each night, we vote for your favourite bake. The winner takes home a prize!

Drop off dates: Wednesday, Thursday & Friday (opening hours 10:00-12:00)

Drop off location: Front Office or Student Centre (and sold) each night.

Baking will be displayed (and sold) each night.

Thank you for supporting our talented cast & crew!

Help stock our food stall with your homemade baking and support our production of *Revenge of the Amazons*!

Every treat helps cover costs and supports our Drama Department.

Baking competition! Each night, we vote for your favourite bake. The winner takes home a prize!

Drop off dates: Wednesday, Thursday & Friday (opening hours 10:00-12:00)

Drop off location: Front Office or Student Centre (and sold) each night.

Baking will be displayed (and sold) each night.

Thank you for supporting our talented cast & crew!

Help stock our food stall with your homemade baking and support our production of *Revenge of the Amazons*!

Every treat helps cover costs and supports our Drama Department.

Baking competition! Each night, we vote for your favourite bake. The winner takes home a prize!

Drop off dates: Wednesday, Thursday & Friday (opening hours 10:00-12:00)

Drop off location: Front Office or Student Centre (and sold) each night.

Baking will be displayed (and sold) each night.

Thank you for supporting our talented cast & crew!

Help stock our food stall with your homemade baking and support our production of *Revenge of the Amazons*!

Every treat helps cover costs and supports our Drama Department.

Baking competition! Each night, we vote for your favourite bake. The winner takes home a prize!

Drop off dates: Wednesday, Thursday & Friday (opening hours 10:00-12:00)

Drop off location: Front Office or Student Centre (and sold) each night.

Baking will be displayed (and sold) each night.

Thank you for supporting our talented cast & crew!

Help stock our food stall with your homemade baking and support our production of *Revenge of the Amazons*!

Every treat helps cover costs and supports our Drama Department.

Baking competition! Each night, we vote for your favourite bake. The winner takes home a prize!

Drop off dates: Wednesday, Thursday & Friday (opening hours 10:00-12:00)

Drop off location: Front Office or Student Centre (and sold) each night.

Baking will be displayed (and sold) each night.

Thank you for supporting our talented cast & crew!

Help stock our food stall with your homemade baking and support our production of *Revenge of the Amazons*!

Every treat helps cover costs and supports our Drama Department.

Baking competition! Each night, we vote for your favourite bake. The winner takes home a prize!

Drop off dates: Wednesday, Thursday & Friday (opening hours 10:00-12:00)

Drop off location: Front Office or Student Centre (and sold) each night.

Baking will be displayed (and sold) each night.

Thank you for supporting our talented cast & crew!

Help stock our food stall with your homemade baking and support our production of *Revenge of the Amazons*!

Every treat helps cover costs and supports our Drama Department.

Baking competition! Each night, we vote for your favourite bake. The winner takes home a prize!

Drop off dates: Wednesday, Thursday & Friday (opening hours 10:00-12:00)

Drop off location: Front Office or Student Centre (and sold) each night.

Baking will be displayed (and sold) each night.

Thank you for supporting our talented cast & crew!

Help stock our food stall with your homemade baking and support our production of *Revenge of the Amazons*!

Every treat helps cover costs and supports our Drama Department.

Baking competition! Each night, we vote for your favourite bake. The winner takes home a prize!

Drop off dates: Wednesday, Thursday & Friday (opening hours 10:00-12:00)

Drop off location: Front Office or Student Centre (and sold) each night.

Baking will be displayed (and sold) each night.

Thank you for supporting our talented cast & crew!

Help stock our food stall with your homemade baking and support our production of *Revenge of the Amazons*!

Every treat helps cover costs and supports our Drama Department.

Baking competition! Each night, we vote for your favourite bake. The winner takes home a prize!

Drop off dates: Wednesday, Thursday & Friday (opening hours 10:00-12:00)

Drop off location: Front Office or Student Centre (and sold) each night.

Baking will be displayed (and sold) each night.

Thank you for supporting our talented cast & crew!

Help stock our food stall with your homemade baking and support our production of *Revenge of the Amazons*!

Every treat helps cover costs and supports our Drama Department.

Baking competition! Each night, we vote for your favourite bake. The winner takes home a prize!

Drop off dates: Wednesday, Thursday & Friday (opening hours 10:00-12:00)

Drop off location: Front Office or Student Centre (and sold) each night.

Baking will be displayed (and sold) each night.

Thank you for supporting our talented cast & crew!

Help stock our food stall with your homemade baking and support our production of *Revenge of the Amazons*!

Every treat helps cover costs and supports our Drama Department.

Baking competition! Each night, we vote for your favourite bake. The winner takes home a prize!

Drop off dates: Wednesday, Thursday & Friday (opening hours 10:00-12:00)

Drop off location: Front Office or Student Centre (and sold) each night.

Baking will be displayed (and sold) each night.

Thank you for supporting our talented cast & crew!

Help stock our food stall with your homemade baking and support our production of *Revenge of the Amazons*!

Every treat helps cover costs and supports our Drama Department.

Baking competition! Each night, we vote for your favourite bake. The winner takes home a prize!

Drop off dates: Wednesday, Thursday & Friday (opening hours 10:00-12:00)

Drop off location: Front Office or Student Centre (and sold) each night.

Baking will be displayed (and sold) each night.

Thank you for supporting our talented cast & crew!

Help stock our food stall with your homemade baking and support our production of *Revenge of the Amazons*!

Every treat helps cover costs and supports our Drama Department.

Baking competition! Each night, we vote for your favourite bake. The winner takes home a prize!

Drop off dates: Wednesday, Thursday & Friday (opening hours 10:00-12:00)

Drop off location: Front Office or Student Centre (and sold) each night.

Baking will be displayed (and sold) each night.

Thank you for supporting our talented cast & crew!

Help stock our food stall with your homemade baking and support our production of *Revenge of the Amazons*!

Every treat helps cover costs and supports our Drama Department.

Baking competition! Each night, we vote for your favourite bake. The winner takes home a prize!

Drop off dates: Wednesday, Thursday & Friday (opening hours 10:00-12:00)

Drop off location: Front Office or Student Centre (and sold) each night.

Baking will be displayed (and sold) each night.

Thank you for supporting our talented cast & crew!

Help stock our food stall with your homemade baking and support our production of *Revenge of the Amazons*!

Every treat helps cover costs and supports our Drama Department.

Baking competition! Each night, we vote for your favourite bake. The winner takes home a prize!

Drop off dates: Wednesday, Thursday & Friday (opening hours 10:00-12:00)

Drop off location: Front Office or Student Centre (and sold) each night.

Baking will be displayed (and sold) each night.

Thank you for supporting our talented cast & crew!

Help stock our food stall with your homemade baking and support our production of *Revenge of the Amazons*!

Every treat helps cover costs and supports our Drama Department.

Baking competition! Each night, we vote for your favourite bake. The winner takes home a prize!

Drop off dates: Wednesday, Thursday & Friday (opening hours 10:00-12:00)

Drop off location: Front Office or Student Centre (and sold) each night.

Baking will be displayed (and sold) each night.

Thank you for supporting our talented cast & crew!

Help stock our food stall with your homemade baking and support our production of *Revenge of the Amazons*!

Every treat helps cover costs and supports our Drama Department.

Baking competition! Each night, we vote for your favourite bake. The winner takes home a prize!

Drop off dates: Wednesday, Thursday & Friday (opening hours 10:00-12:00)

Drop off location: Front Office or Student Centre (and sold) each night.

Baking will be displayed (and sold) each night.

Thank you for supporting our talented cast & crew!

Help stock our food stall with your homemade baking and support our production of *Revenge of the Amazons*!

Every treat helps cover costs and supports our Drama Department.

Baking competition! Each night, we vote for your favourite bake. The winner takes home a prize!

Drop off dates: Wednesday, Thursday & Friday (opening hours 10:00-12:00)

Drop off location: Front Office or Student Centre (and sold) each night.

Baking will be displayed (and sold) each night.

Thank you for supporting our talented cast & crew!

Help stock our food stall with your homemade baking and support our production of *Revenge of the Amazons*!

Every treat helps cover costs and supports our Drama Department.

Baking competition! Each night, we vote for your favourite bake. The winner takes home a prize!

Drop off dates: Wednesday, Thursday & Friday (opening hours 10:00-12:00)

Drop off location: Front Office or Student Centre (and sold) each night.

Baking will be displayed (and sold) each night.

Thank you for supporting our talented cast & crew!

Help stock our food stall with your homemade baking and support our production of *Revenge of the Amazons*!

Every treat helps cover costs and supports our Drama Department.

Baking competition! Each night, we vote for your favourite bake. The winner takes home a prize!

Drop off dates: Wednesday, Thursday & Friday (opening hours 10:00-12:00)

Drop off location: Front Office or Student Centre (and sold) each night.

Baking will be displayed (and sold) each night.

Thank you for supporting our talented cast & crew!

Help stock our food stall with your homemade baking and support our production of *Revenge of the Amazons*!

Every treat helps cover costs and supports our Drama Department.

Baking competition! Each night, we vote for your favourite bake. The winner takes home a prize!

Drop off dates: Wednesday, Thursday & Friday (opening hours 10:00-12:00)

Drop off location: Front Office or Student Centre (and sold) each night.

Baking will be displayed (and sold) each night.

Thank you for supporting our talented cast & crew!

Help stock our food stall with your homemade baking and support our production of *Revenge of the Amazons*!

Every treat helps cover costs and supports our Drama Department.

Baking competition! Each night, we vote for your favourite bake. The winner takes home a prize!

Drop off dates: Wednesday, Thursday & Friday (opening hours 10:00-12:00)

Drop off location: Front Office or Student Centre (and sold) each night.

Baking will be displayed (and sold) each night.

Thank you for supporting our talented cast & crew!

Help stock our food stall with your homemade baking and support our production of *Revenge of the Amazons*!

Every treat helps cover costs and supports our Drama Department.

Baking competition! Each night, we vote for your favourite bake. The winner takes home a prize!

Drop off dates: Wednesday, Thursday & Friday (opening hours 10:00-12:00)

Drop off location: Front Office or Student Centre (and sold) each night.

Baking will be displayed (and sold) each night.

Thank you for supporting our talented cast & crew!

Help stock our food stall with your homemade baking and support our production of *Revenge of the Amazons*!

Every treat helps cover costs and supports our Drama Department.

Baking competition! Each night, we vote for your favourite bake. The winner takes home a prize!

Drop off dates: Wednesday, Thursday & Friday (opening hours 10:00-12:00)

Drop off location: Front Office or Student Centre (and sold) each night.

Baking will be displayed (and sold) each night.

Thank you for supporting our talented cast & crew!

Help stock our food stall with your homemade baking and support our production of *Revenge of the Amazons*!

Every treat helps cover costs and supports our Drama Department.

Baking competition! Each night, we vote for your favourite bake. The winner takes home a prize!

Drop off dates: Wednesday, Thursday & Friday (opening hours 10:00-12:00)

Drop off location: Front Office or Student Centre (and sold) each night.

Baking will be displayed (and sold) each night.

Thank you for supporting our talented cast & crew!

Help stock our food stall with your homemade baking and support our production of *Revenge of the Amazons*!

Every treat helps cover costs and supports our Drama Department.

Baking competition! Each night, we vote for your favourite bake. The winner takes home a prize!

Drop off dates: Wednesday, Thursday & Friday (opening hours 10:00-12:00)

Drop off location: Front Office or Student Centre (and sold) each night.

Baking will be displayed (and sold) each night.